



# PORTADOWN COLLEGE PROSPECTUS 2024/25

# Index

## Prospectus 2024/2025

<b>Welcome</b>	3
<b>Our Ethos</b>	6
<b>Supporting our Students</b>	8
<b>Celebrating our Students</b>	14

**GCSE CURRICULUM**

Agriculture & Land Use	32
Art & Design	33
Biology	34
Business Communication Systems	35
Business Studies	36
Chemistry	37
Digital Technology Multimedia	38
Digital Technology Programming	39
Drama	40
English Language	41
English Literature	42
Food and Nutrition	43
French	44
Further Mathematics	45
Geography	46
Health and Social Care	47
History	48
Learning for Life and Work	49
Mathematics	50
Moving Image Arts	51
Music	52
Physical Education	53
Physics	54
Religious Studies	55
Single Award Science	56
Spanish	57
Technology & Design	58

**30**

**SIXTH FORM CURRICULUM**

**62**

Art & Design	72
Biology	74
Business Studies	76
Chemistry	78
Computer Science	80
Digital Technology (previously ICT)	82
Drama & Theatre	84
Economics	86
English Literature	88
French	90
Further Mathematics	92
Geography	94
Government & Politics	96
Health & Social Care	98
History	100
Life and Health Sciences	102
Mathematics	104
Moving Image Arts	106
Music	108
Nutrition and Food Science	110
Physics	112
Psychology	114
Religious Studies	116
Spanish	118
Sports Science and the Active Leisure Industry	120
Technology & Design	122
Tourism	124

<b>Admissions Policy</b>	126
--------------------------	-----



Senior Prefects 2023 - 2024



*Fortiter et Humaniter*



# Chairman's Welcome

On behalf of the Board of Governors, it gives me great pleasure to pen this short piece for the College prospectus 2024/25.

2024 will mark the Centenary of the foundation of Portadown College as, in 1924, a number of prominent citizens from Portadown bought Edenderry House on the banks of the River Bann with ‘...the intention of starting and carrying on a school therein to be called Portadown College to provide a system of Preparatory and Secondary education...’.

From a school with an enrolment of 80 in the 1920s, the College now, as part of the Dickson Plan system, provides post-primary education for over 800 young people each year.

Current students, staff and the Board of Governors are planning a series of special events and activities in anticipation of marking this significant milestone in PC’s history. We hope that former students, current students and the community will enjoy these forthcoming celebrations.

The Board of Governors is encouraged by the ‘outcomes’ based approach of the new College Development Plan and will continue to support the Principal, Miss Gibb and her team as they place the College at the heart of its community in Portadown and the surrounding countryside.

Thank you for taking the time to consult this prospectus; we hope that it will encourage a diverse range of young people to strive to achieve a place at Portadown College.

Peter H Aiken  
Chairman  
Portadown College Board of Governors



# Principal's Welcome

Portadown College, affectionately referred to as 'PC', is a very special place at the heart of its community. Since 1924, we have been renowned for our academic excellence, caring ethos and supportive learning environment. We welcome young people from all backgrounds to become part of our unique 'PC' family.

Whether you are currently a student in one of our local schools, or new to the area, we are committed to offering you an engaging, challenging and rewarding experience through which you can grow as an individual in pursuit of your personal goals.

As a young adult embarking on the next stage of your educational journey at GCSE or A Level, we want you to be inspired by your learning and enriched by College life. Excellent academic and pastoral support, complemented by an array of extra-curricular opportunities, will shape your time with us and prepare you for your place in the world beyond school.

Through our Prospectus for the forthcoming year, we are proud to afford you a flavour of the fresh experiences and exciting opportunities which await you as you begin the next significant chapter of your education with us here at 'PC'.

**Gillian R Gibb**  
Principal

# Portadown College Ethos

Portadown College has a long and proud history; founded in 1924, the College is a selective, academic, post-14 school with an excellent reputation, friendly atmosphere, sense of community and very good relations between our staff, students and parents.

## Our College motto:

*Fortiter et Humaniter*

(Courage and Courtesy)

## Our Core Values

Nurturing the individual

Respecting ourselves and others

Serving our local and global community

Encouraging lifelong learning



Students know they are cared for as individuals and are expected to work hard and achieve high standards in everything they do in preparation for their role as responsible, independent, confident and thoughtful adults.

Whilst providing students with the courses they need to gain qualifications for higher or further education and the world of work, we aim to do so in a unique environment specialising in this stage of education.

The commitment and work ethic of Portadown College's staff was acknowledged in December 2020, when PC became the proud recipient of the Investors In People Standard Accreditation. In their words of commendation, Investors in People observed:

***"Your people are the foundation of the College's success and paint a clear picture of a friendly, hard-working community, within an ethos that contributes significantly to the high standards achieved."***

We are cognisant of the need to provide our students with opportunities to be increasingly responsible for their personal learning, managing their own time and making informed decisions about their futures. However, we also recognise the need for high quality structured teaching, specialist careers guidance and pastoral support so as to help each young person reach his or her potential.

Our students have a reputation for academic success, extra-curricular participation and charitable enterprise. We want students to enjoy their time with us at "PC".

In addition to the broad range of GCSE and A Level subjects on offer, students are encouraged to take advantage of the vast array of other qualifications, clubs, societies, educational visits and performances and get involved in wider College life. We nurture all learning, not just examination results.

Portadown College is more than a school; it is a College community. We value and celebrate the individual whilst recognising our interdependence. It is this distinctive ethos which unites us in collegial pride and the pursuit of excellence.





## Our Aims

Our aims flow from our ethos and core values:

### Academic and Personal

- To ensure that all students strive to achieve their full academic, personal, moral, spiritual and social potential.
- To provide each student with access to, and the necessary individual support for, a range of studies in order to acquire the relevant qualifications for Further and Higher Education and the world of work.
- To facilitate the continuing professional development of all our staff.
- To encourage a culture celebrating success in all we do.

### Extra-Curricular

- To enthuse our students to get involved in a very wide range of activities promoting the qualities of self-discipline, integrity, competitiveness, initiative, courtesy, independence and self-confidence.
- To encourage each individual in our College community to take responsibility for his/her role as a citizen by seeking to improve the lives of others.

### Partnership

- To maintain and develop the key relationship between home and school to ensure the very highest standards of support and achievement for all our students.

## College Houses

The College Houses are Seale, Shillington and MacCallum, which are represented on the College badge by the colours green, red and yellow respectively. The house structure provides the basis for a very wide range of inter-house competitions, including sports, music and debating.

## College Uniform

The complete College uniform must be worn, not only in school hours, but on the journey to and from school and when students are representing the College as team members or at special functions. Circulars about uniforms for boys and girls setting out the requirements in full detail are sent to parents annually. We ask for the total co-operation of all parents in ensuring that the guidance about uniform and general appearance is followed. The College seeks to follow the advice of the Consumer Council's report on school uniform by keeping requirements to a minimum in order to reduce expenditure for parents.

## PC Student Voice

### Giving the students a voice

This forum is vital as the student voice can be heard by those who run the school and it provides the opportunity for students to have a say in important decision-making processes.

# Pastoral Support

## Pastoral Care

Portadown College strives to create a caring, supportive and purposeful atmosphere which ensures that each student will feel that he/she has a unique and valued contribution to make to College life. Our pastoral care therefore promotes students' personal and social development, as well as fostering positive attitudes to learning through the quality of teaching and the good relationships amongst students, teachers and the wider College community.

The arrangements for monitoring students' overall progress (academic, personal and social) are a vital element of our pastoral care provision. Staff contribute formally and informally to caring for students through contact in registration periods, classes and extra-curricular activities. All staff take responsibility for monitoring students' progress and share with the student in the review and support system. Administrative staff support the teaching staff in monitoring attendance records and other issues of a pastoral or medical nature.

The Pastoral Team has specific responsibility for student induction and welfare; it forms a vital link in the well-being and academic progress of students by liaising closely with Group Tutors, subject teachers, Heads of Department and parents. Parental Induction and parent/teacher meetings also provide opportunities for good home/school liaison and partnership.

Two Year Heads oversee the work of each year group, seeking to support students, identify problems early and communicate effectively with parents. Each student has a Group Tutor with whom they can develop a close relationship in the registration, administration and pastoral session each morning.

The Pastoral Team also co-ordinates the delivery of Personal Development (PD), incorporating age appropriate information and guidance on a range of personal, social and emotional issues. As part of our duty of care and in accordance with Department of Education regulations, this Personal Development programme complements the College's policies on Relationships and Sexuality Education and Drug Education, both of which are available on the website.

## Counselling & Mentoring

A Counsellor is available for consultation by students on a strictly confidential basis. Students can also access a mentoring service run by REACH, a local registered charity with the vision to help young people fulfil their potential.

## Safeguarding

The principles and philosophy which underpin our work with children are those set out in the UN Convention on the Rights of the Child (UK Agreement in 1991) and enshrined in the Children (NI) Order 1995 (effective from November 1996). In particular the principle we support is that every young person has the fundamental right to be safe from harm and that those looking after them should give proper care to their physical, emotional and spiritual well being. The young person's welfare must always be paramount and Portadown College, having the best interests of the young people at heart, is committed to offering a protective, supportive and safe environment. Guidelines for Safeguarding and Child Protection are clearly set down by the Education Authority and the Department of Education and form the basis of our School Policy and Procedures. Parents may access this information at any time and a summary is provided within the Parental Information Booklet distributed at the start of the academic year.

Safeguarding and Child Protection guidelines protect our students by ensuring that everyone who works in our College, teachers, support staff and volunteers, are provided with clear guidance on the action which is required where abuse or neglect of one of our students is suspected. Our overriding concern as caring adults must be the welfare and safety of all of our young people.

## Attendance

Very regular attendance is essential for satisfactory academic progress. Attendance and punctuality are recorded electronically and closely monitored. Attendance figures and reasons for absence are recorded for each student. Poor attendance is invariably linked with under-achievement at school and parents should always try to plan family holidays during school holidays. Sixth Form students may apply for Educational Maintenance Allowances. These allowances are only paid if attendance, progress in sixth form study and conduct are satisfactory. Average College attendance: 92%.



## Behaviour Management

There are statutory and legal obligations on school authorities to ensure the health and safety of every person learning or working within the College. The College has a written policy on Behaviour Management and a copy of the Code of Conduct is given to every student. This Code of Conduct in essence contains straightforward advice to students to be sensible, considerate and courteous. We stress that such instructions are for the safety of all and the efficient organisation of the College. Behaviour Management operates at a positive level and mutual trust is encouraged between students and staff; appropriate sanctions are available and used when

required. We believe that the best discipline is self-discipline and we expect the full co-operation of parents in supporting the school in maintaining high standards of behaviour within school and also when students are travelling to and from school.

As a College Community we regard bullying as totally unacceptable. The College Anti-bullying Policy provides details of the preventive measures in place and procedures in place for responding to incidents of bullying behaviour.

All policies are available on the College website or on request.

# Curricular Support

## Subject Teachers

- Give specific advice in class on how to approach learning in their subjects.
- Provide additional advice and support as required by individuals.
- Are subject experts, highly qualified graduates and 'A' Level teaching specialists.

## Homework

Students are given homework so that work done in school can be consolidated, thereby enhancing skills and knowledge. An integral part of the learning process, homework helps students to acquire study and examination skills, enabling them to demonstrate their level of interest and motivation.

Students are given guidance on the amount, frequency, types of homework set and the expected time commitment appropriate to the Year Group. Advice on study skills at Key Stages 4 and 5 is provided by both external agencies and subject specialists in College. Each student is provided with a personal homework diary which should be used as an aid to the organisation of homework, private study and revision.

## Blended Learning

At Portadown College, we are committed to preparing our students to take their next steps in education. The College has spent a lot of time over recent years ensuring that teachers and students are proficient in the use of online learning tools such as Google Classroom. This has meant that students can continue to learn outside school, developing skills that will see them become independent, lifelong learners in the process.

## Reporting and Support

The progress of students is carefully and

consistently monitored through regular observation, assessment and testing. In addition to the term and trial examinations, an ongoing review and support programme identifies students who are having difficulties or who seem to be making insufficient progress. This programme involves students, staff and parents and assists students in reflecting on their progress, achievements and areas for personal improvement. Formal reports are issued twice yearly. Parents are expected to give their full support to actions deemed necessary by the College to enhance their child's progress. The Parents' Meetings coincide with the issue of reports.

## Careers Guidance

Guiding students towards appropriate careers is a central function of our College. Supported by other members of staff, specialist Careers teachers:

- Ensure the Careers Library is well stocked and reference materials are contemporary.
- Guide students to useful sources of information.
- Organise university visits.
- Arrange and undertake careers interviews.
- Prepare students for UCAS entry and other university entry systems.
- Organise careers events in the College to help inform students' pathways.
- Support students when examination results are published.

Through attendance at careers conventions, open days at universities/teacher training institutions, by listening to invited speakers from industry, institutions of higher education and the Careers Advisory Service and personal interviews, students are fully supported to make appropriate



decisions about their future education and careers. Portadown College has established excellent relationships with all major universities and higher education institutes throughout the UK and Ireland.

In addition, all Year Heads and subject teachers take a special interest in the personal and social education of their students and the development of career knowledge. Personal career plans contribute to this development.

### **Learning Support Co-ordinator**

Portadown College promotes an inclusive ethos. The College is committed to removing barriers to learning for all students with a learning difficulty and/or disability. Students, parents and the Learning Support Co-ordinator work closely together to ensure that all reasonable adjustments are made so that no student is disadvantaged. If a young person has a specific disability our Learning Support Co-ordinator will work with the family to build an understanding of how we can support the young person in College.

### **College Library**

The College Library serves as an important learning hub for all year groups, supporting study, research and recreational reading. Located at the entrance to the Sixth Form Centre, the Library is used throughout the day by Sixth Form students during their study periods.

The College Library houses an up-to-date and relevant stock to support all areas of the curriculum at PC, including the latest textbooks, study guides, subject magazines, newspapers and an extensive DVD collection. There is an impressive fiction collection including titles from all the popular authors to encourage reading for pleasure. Students are welcome to suggest titles for purchase and the College Librarian can recommend books to suit all reading tastes and abilities.

While the College Library is important at all stages of learning, its role is critical in Sixth Form, when the focus changes from guided to more independent learning. Recognising the



value of a library and the librarian's unique skills will help to lay a strong foundation for university, when students will be expected to work independently and develop the research skills necessary to be successful at degree level.

Portadown College has a qualified librarian on our staff to assist students with their information needs, for example suggesting titles for wider reading and recommending appropriate websites to improve coursework. Upon student request, the librarian also provides tailored sessions for all subjects to help develop library research skills, which are useful at GCSE level, but even more important at A Level.

## ICT Facilities

The College recognises the contribution ICT can make to enhancing students' learning experiences. We operate two networks of computers (PCs and MACs), including four classrooms dedicated to Digital Technology and Computing. The vast majority of classrooms have access interactive whiteboards and there

are a number of departments with clusters of PCs for student use. We seek to embrace opportunities to develop our students' ICT skills and digital literacy, including the use of Virtual Learning Environments, to prepare learners for the world beyond College.

We seek to embrace opportunities to develop our students' ICT skills and digital literacy, including the use of Virtual Learning Environments, to prepare learners for the world beyond College.

# Year 11 Induction

As part of the induction process at Portadown College, various events are organised to enable students to become familiar with their new learning environment. The key events are outlined below:

## Summer Term

Year 10 students transferring to the College are invited for their first induction day when they have the opportunity to meet their Group Tutor, Year Head and Senior Staff. Students participate in a range of group activities with their registration group and receive information to help them prepare for the start of the new term.

## August

New Year 11 students attend a half day at the College, when they will have time with their registration group, hear about the extra-curricular activities available at the College and experience their first timetabled classes.

## September

An Activity Day is organised during the first month of the term to promote and develop a range of skills and personal qualities including problem solving, teamwork, leadership and resilience. Students undertake a wide range of outdoor activities with qualified instructors and are accompanied by their Group Tutor.

## October

To provide support for students as they begin their GCSE courses, study skills workshops are organised. These allow students to reflect on how they learn and what changes may be required to fulfil their potential at GCSE level.







*"Taking GCSE courses has helped me in finding my skills and also connecting with many students. I really enjoy taking GCSE courses in PC!"*  
- Sanoha Joy

*"I think the Induction Day and the Activity Day helped us become more familiar with the school and help us know our way around. We've also got opportunities to talk to more people in our year and create closer relationships with the students and teachers."*  
- Antonia Ifteni

*"The Fun Day allowed me to interact with the other Year 11s and get to know them more. It was also a great day together with lots of activities."*  
- Noah Crooks

*"I found taking up GCSE subjects quite easy. The teachers at Portadown College ensure that you understand everything going on in class and are very helpful when you need the extra help. If you choose GCSE subjects that you are passionate about and want to learn more about, you will find taking them up easy."*  
- Lily Hoey

*"Settling into PC has been easy as all the teachers have been kind and welcoming."*  
- Isla Belshaw

Parents of Year 11 students are invited to attend a Parents' Information Evening in September, when relevant issues regarding the transition to College are highlighted and information is provided about the support available to students and parents. This is also a valuable opportunity for parents to speak to staff if they have any questions following their son's or daughter's first few weeks at the College.

# Celebrating Special Achievements 2022-2023

A selection of other notable successes and activities in the past year at PC are noted in the following pages.

## Modern Languages

Lucia Best won the Anthea Bell Translation Prize organised by Oxford University. She was the top student in the UK at GCSE level - a great achievement.

## Biology Competitions

PC Biology students were very successful in two national competitions, winning many awards.

### British Biology Olympiad

(for Year 14 students)

**Silver** - Charlotte Eagle

**Bronze** - Gabriela Da Costa

### British Biology Challenge (for Year 11 students)

**Gold:** Charlie Beattie    Bethany Best  
Kate Haffey    Joshua Henderson  
Ryan Irwin    Noah Jones  
Lee McClelland    Laura McGuinness  
Sophie Millar    Myah Rice  
Sarah Spence

**Silver:** Hannah Davison    Faith Miskelly  
Natalia Vancea

**Bronze:** Saffron Baxter    Emily Finlay  
Grace George    Rebecca George  
Jane Mullen

## Music

Amy Barron secured a place on French horn in the Ulster Youth Orchestra.

## Journalism Club

Faith Rowe had articles published on Northern Ireland World.com and in The Portadown Times, while her article 'Tackling the Stigma of Girls' Rugby' was published in the June edition of Local Women Sport.

## Politics in Action

Lucy Browne was awarded a full year's scholarship at Lawrenceville School, New Jersey with Protégée for Peace.

Kazim Tug was awarded a place on a two week leadership programme in the USA during the summer.

Sabrina Baptista, Timothy Hayes, Kazim Tug have become members of the Shared Island Youth Forum.

Sabrina Baptista shared the stage with Tanaiste and Foreign Minister, Micheal Martin in a Shared Island Dialogue Series.

Gemma Dennison and Sabrina Baptista were selected to represent the UK in Istanbul at European Youth Parliament.

## UKMT Maths Challenges

The following students achieved Gold Certificates in their respective UKMT Maths challenges:

### Senior Maths Challenge

(for Years 13&14)

Matthew Hanna, Rachel Finlay and Naomi Dundas

### Intermediate Maths Challenge

(for Years 11&12)

Rees Lawson, Jake Cooke, Sam Ward.





# Supporting our Students

# Celebrating

# Extra-Curricular

# Activities

Clubs and societies in Portadown College cater for a wide range of games, interests, skills and hobbies; these take place at lunch time, after school, on Saturdays, at weekends or over longer periods, at home and abroad, and in and out of term time. The College can be justly proud of its success and reputation in these activities which are a vital part of school life.

**The following Clubs and Activities form this important complementary provision:**

**Art Club**

**Badminton Club**

**Big Band**

**Chess Club**

**Choir**

**Chamber Choir**

**Coding Club**

**Dance Club**

**Debating Society**

**Dramatic Society**

**Film Club**

**Geography Society**

**Horticulture Club**

**Journalism Club**

**Lifeline Community and  
Charity Group**

**Orchestra**

**PC Book Clubs**

**PC Business Club**

**PC Writers' Room**

**Public Speaking**

**Scripture Union**

**Student Voice**

**Table Tennis**

**Theatre Trips**

**The Duke of Edinburgh's  
Award Scheme**



### Art Club

The Art Club meets at lunchtime once a week. The purpose of Art Club is to provide students who have an interest in art, an opportunity to explore art and craft forms beyond what is offered in the curriculum. It gives students the opportunity to work individually and in groups.

The Art Club offers students an opportunity to explore a range of creative processes in a relaxed and welcoming environment. The Art Club is for both those who study Art and Design those who do not.

### Badminton Club

The Badminton Club takes place every Thursday at lunchtime in the Sports Hall. It is open to all year groups and all students are welcome irrespective of ability.

### Big Band

Big Band consists of wind instruments and percussion performing jazz style pieces at a variety of school functions.

### Book Clubs

Book Clubs take place for both Year 11 and 12 students and sixth form students in the library during Wednesday and Friday lunchtimes. Year 11 and 12 students have enjoyed reading the Carnegie Shortlist and a range of novels both classic and contemporary. Year 13 and 14 students read a wide range of contemporary fiction which they promote on the Book Club Instagram account @pclubbookself.

### Chess Club

Chess club is an extra-curricular activity run by the Mathematics and Physics departments. It is open to all students and takes place on a Tuesday lunchtime. The atmosphere is relaxed, friendly and it is a great opportunity to meet new people as well as challenging your strategic thinking skills! Aside from Chess, the club also caters for draughts players too.

### Choir

Choir is non-auditioned and open to girls across the school. They sing a varied programme of traditional and contemporary songs. Choir performs at the Music Department's Spring Concert, Prize Day and the Carol Service. Choir is a popular activity and is a great way for students to enjoy music making outside the classroom.

### Chamber Choir

Chamber Choir is a smaller mixed voice Choir to which entry is via audition. This group also performs at various functions and events in the local community.

### Coding Club

The Coding Club meets every two weeks and is open to students in Years 11 and 12 who have an interest in experiencing the digital world outside the formal classroom environment. The club exists to afford students the opportunities to further develop skills such as problem-solving and working with peers as well as widening their coding knowledge in a fun and exciting way. Outside speakers from digital technology industries and entering UK wide and global



competitions are just some of the activities enjoyed throughout the year. No prior knowledge of coding is required, nor is the requirement to be studying a computing based subject.

### **Dance Club**

The Dance Team competes in the Northern Ireland Creative Movement and Aerobic Championships and the Ulster Fitness and Dance Championships as a group and also as solo, duet and quad participants. The Club meets on a Wednesday afternoon and perform a variety of styles from Modern, Hip Hop to lyrical.

### **Debating Society**

The Portadown College Debating Society meets every two weeks to debate the key issues of the day. Students from all year groups have debated a range of controversial topics from the existence of God to the dangers posed by AI. Special events feature seasonal debates and the hotly contested inter-house debate at the end of the school year. New members are always welcome to the debating table or to join the audience for what continues to be a popular and well attended extra-curricular activity at Portadown college.

### **Dramatic Society**

The Dramatic Society allows any student to have the opportunity to be involved in the staging and management of the annual school production. The play is staged annually in early February and auditions are held in September with rehearsals taking place after school on selected days until the first performance. Actors can come from all years and any student is encouraged to audition.

There are also other opportunities relating to the production of the play with students required

to take on roles in stage management, ticket production and sales, front of house, make-up, costume management, set design and decoration, art, technological support plus sound and lights. Recent productions have included *Murder on the Orient Express*, *The 39 Steps*, *Pygmalion*, *Jane Eyre*, *The Prime of Miss Jean Brodie*, *Hobson's Choice*, *Dancing at Lughnasa* and *Juno and the Paycock*. The play for 2024 is the evocative *Our Town* by Thornton Wilder.

### **Film Club**

The Film Club meets on a weekly basis and is facilitated by the educational charity 'Into Film'. Film Club gives students the space to watch, discuss and review films in a relaxed environment. From a catalogue of over 4,000 films this club enables students to learn through and about film, contributing to their cultural, creative, and personal development.

### **Geography Society**

Geography society meets once a month to discuss a range of geographical topics and to raise awareness of current global issues. The members have enjoyed a variety of activities including global pumpkins and litter picking in the local area along with entering a range of geographical competitions.

### **Horticulture Club**

This new addition to the extra-curricular programme is for students in Years 11 and 12 who have an interest in planting, growing and enjoying flowers, fruit and vegetables. We meet on a regular basis through the different seasons and learn new skills such as propagation and pruning. Mrs Glynn and Mr Hunter enjoy spending time with the budding Monty Dons.

### **Journalism Club**

PC Journalism is an extra-curricular club that meets weekly to create journalism for a variety of media. The club exists to create opportunities for you as students to enter the world of journalism.





Support is offered to those students who choose to engage in some investigative journalism, writing features and filming news packages where they independently carry out research and conduct interviews.

Every year, students participate in BBC Young Reporter, which enables aspiring broadcast and print journalists to produce their own news stories for which they investigate, take photos and carry out interviews. Students take part in BBC Digital Cities, BBC NI Festival of News and Cinemagic workshops and interactive news events. Students produce their own films on a range of newsworthy issues.

### **Lifeline Community and Charity Group**

In Lifeline approximately 200 students volunteer to raise money for charity and to take part in various community events. Lifeline meets in the Assembly Hall on a Tuesday at break-time to plan events, organise volunteers, and decide what charities will be supported. The students make all final decisions about allocation of monies raised.

Lifeline organises a number of events during the year to raise money for charity. These have included a non-uniform day to sponsor the education of 3 children through Plan International, a Sponsored Walk which raised money for 13 different charities; PC Live TV; a coffee morning, a colour run, a table quiz and our very successful talent show.

Lifeline further contributes to our local community through food bank collections, a Senior Citizens' Concert and visits to local care homes.

A number of our students train as ambassadors for Concern to make other students aware of the work that Concern do across the world and so encourage them to take part in the Fast for Concern. We have also donated shoe boxes to The Samaritan's Purse to ensure children receive presents for Christmas.

### **Orchestra**

School Orchestra performs at the Music Department's Spring Concert, Prize Day and Carol Service. It consists of students from around Grade 3 to diploma and plays a wide variety of orchestral music.

### **PC Business Club**

PC Business Club takes place every month. It provides a forum for local businesses to discuss key business and economic issues. Students have the opportunity to develop their learning beyond the classroom on topics such as Enterprise, Business Ownership, managing people and Macroeconomics. Attendance at the club also provides networking opportunities for students, allowing them to gain invaluable knowledge in the business field. The club have worked with companies including Almac, McDonald's, Craft Barber and Apache Pizza.

### **PC Writers' Room**

The Writer's Room exists as an outlet for students to express themselves in writing. Whether through short stories, fiction, personal writing or poetry, students thrive on this platform that encourages self-expression.

Many students enjoy the challenge of entering poetry and short story competitions.



## Public Speaking

Portadown College students are acclaimed as articulate public speakers. Students are given the opportunity to enter a range of competitions including the Soroptimist Public Speaking Competition, The Edgar Graham Memorial Public Speaking Competition held in Stormont, and the Business and Professional Women Public Speaking Competition. These competitions encourage the development of communication skills across a variety of settings, whether formal speaking or spontaneous expressions of thanks.

## Scripture Union

PCSU meets on Tuesday at lunchtime with at times up to 200 students attending a programme of varied events, involving many different speakers from the community and beyond. Most weeks we all meet together in the Assembly Hall and usually once a month there are small group meetings. There is also a student prayer meeting on Thursday mornings. This year, PCSU have been working through the Alpha Course, where small groups are led in discussions by Sixth Year students.

Other highlights during the year include the SU weekend at Seaview, Kilkeel, in March. There is also an annual Dinner Dance in Brownlow House, in January, along with socials and the final SU night in April.

## Student Voice

Membership of the Student Voice (SV), PC's Student Council, is comprised of representatives from all year groups at the College. The group meets on a regular basis to discuss key student issues and make plans to improve College life.

Over recent years, members have engaged in a number of initiatives to improve school life for our students and worked with members of the Pastoral Team to engage in anti-bullying initiatives and World Mental Health Day.

## Table Tennis

The Table Tennis Club meets on Wednesdays at lunchtime in the Gym. This extra-curricular activity is open to all levels: beginners, improvers and skilled. The main emphasis is on enjoyment and students are encouraged to bring friends along to play either singles or doubles.

## Theatre Trips

Regular trips are organised for students to visit the theatre in Armagh, Belfast and Dublin. A wide range of different genres of theatre can be experienced on theatre outings and, recently,

students have been able to enjoy styles as diverse as Greek, physical, epic, musical and naturalistic theatre.

Trips are also organised to see live theatre streamed into local cinema. Hitherto, the students have enjoyed National Theatre productions of Hamlet, King Lear, The Threepenny Opera and Frankenstein plus an RSC production of King Lear. They also saw A Streetcar Named Desire from the Young Vic and productions from local theatre company Bruiser who specialise in physical drama.

The trips are open to any students as a way of broadening their cultural experiences and giving them a lifelong interest.

## The Duke of Edinburgh's Award Scheme

At PC, we place a high value on our Duke of Edinburgh programme, helping young people have fun, make friends, improve their self-esteem and build confidence. They can gain essential skills and attributes for work and life such as resilience, problem-solving, teamwork, communication and drive. The Duke of Edinburgh Award Scheme is open to students in Year 11 (Silver Award) and Year 13 (Gold Award). The award is divided into sections – physical, skill, volunteering, expedition and residential (Gold only). Students complete these sections in diverse ways from kickboxing and swimming for physical, developing skills in driving and first aid, volunteering in a range of youth events or charity activities and participating in youth and outdoor residentials. Students begin to complete all sections throughout the academic year, with the expedition preparation taking place both in school and in the Mourne Mountains. During this preparation, students meet on a weekly basis to prepare and acquire skills in map reading and camp craft to prepare them for their qualifying expedition at the end of June (Silver for 3 days and 2 nights, Gold for 4 days and 3 nights). Despite the midge bites and blisters (evidence of a successful Duke of Edinburgh experience) students make memories that will last a lifetime.







# PC Dramatic Society

Images from the 2023 College play: *Murder on the Orient Express*.



# Celebrating Sporting Achievements

Portadown College enjoys a proud sporting tradition of students excelling at school representative level. We also recognise the holistic, lifelong benefits of sporting participation. Parents/carers are therefore expected to encourage students to participate in sport and, on average, students have access to two hours of PE, including sport, per week.

There are excellent Games facilities on the School campus - 1 Sports Hall (including 3 badminton courts and a fitness suite), 1 gymnasium, 1 Assembly Hall, 1 refurbished pavilion including a state of the art fitness suite, 2 all-weather hockey pitches, 3 rugby pitches, a running track and 2 tennis courts. Additional facilities off-site that are in regular use include a synthetic surface hockey pitch, swimming pool, golf course and leisure centre facilities.

## **Promoting good fitness habits**

Portadown College caters for the elite sportsperson, with numerous students representing Northern Ireland, Ireland and Great Britain over the years. A proud list of sporting alumni includes Lady Mary Peters, Dr Rory Best OBE, Simon Best, David Hamilton, Kate Richardson, Colin Turkington and Lizzie Colvin.

However, many sports are experienced at a much less competitive level and are enjoyed by Year 12, 13 and 14 each Wednesday/Thursday afternoon, including fitness training, swimming, lifesaving, canoeing, aerobics, power-walking, weight training, rugby, hockey, football, volleyball and netball.





## Girls' Hockey

1st XI won the Senior Schools Shield beating Rainey Endowed in the Final  
2nd XI won the 2nd XI McDowell Plate

## Representative Honours

Rebekah Lennon - Ireland U16s Squad (4 Nations Tournament).

Rebekah Lennon - Ulster U16s (Interprovincial Tournament).

Leah Galbraith - Ulster U16s (Interprovincial Tournament).

Rachel Lennon - Ulster U18s (Interprovincial Tournament).

## Boys' Hockey

U16 XI won the Taylor Cup

## Representative Honours

Harry Taylor - Ulster U16s (Interprovincial Tournament).

Oscar Eakin - Ulster U16s (Interprovincial Tournament).

John McQuitty - Ulster U16s (Interprovincial Tournament).

## Girls' Rugby

### Representative Honours

Beth McBurney - Ulster U18s (Interprovincial Tournament).

Rebecca Anderson - Ulster U16s (Interprovincial Tournament).

## Boys' Rugby

1st XV won the Danske Bank Schools Trophy

## Representative Honours

Jamie Jackson - Irish Schools Squad.

Bobby Newell - Ulster Clubs U18s (Interprovincial Tournament).

Danny Guy - Ulster Clubs U18s (Interprovincial Tournament).

Tyler Jackson - Ulster Clubs U18s (Interprovincial Tournament).

## Girls' Football

U15 XI - NI Electric Ireland 7-a-side Competition winners

U15 XI - NI Junior Cup Semi-finalists

U16 XI - Mid Ulster League winners

## Boys' Football

U18 XI - NI Schools Plate winners

## Athletics & Cross Country

Natalie McCrory (Triple Jump/Long Jump) & Hannah Hayes (High Jump) continued to perform to a high level, medalling regularly at the various NI Age Group Championships.

Katie Graham (Cross Country) competed at the Ulster Schools and Irish Schools Cross Country Championships.

## Representative Honours

Katie Graham - NI Schools U17 squad (London Mini Marathon)

Katie Graham - NI U18 squad (International Mountain Running Championships, Annecy, France)

Katie Graham - Irish Schools U17 squad (Schools International Championship,



Liverpool)  
Katie Graham – Ireland U21 squad (World Mountain Running Championship)

### **Volleyball**

U18 Boys won the NI Schools League  
U18 Boys finished runners up in the All-Ireland Schools Play Off

### **Representative Honours**

Isaac Finch - NI U20 squad  
Samuel Edgar – NI U20 squad  
Alasdair McGuinness – NI U20 squad  
Mark Christie – NI U20 squad  
Jack Lockhart – NI U20 squad  
Lyndsey Jameson – NI U19 squad  
Keziah Finch - NI U19 squad  
Alanna Elliott - NI U19 squad  
Jenna Clarke - NI U19 squad

### **Netball**

#### **Representative Honours**

Ellie Warnock – NI U17 Development squad  
Laura McGuinness – NI U15 Southern Future Internationals Academy  
Myah Rice – NI U15 Southern Future Internationals Academy  
Lily Haffey – NI U15 Southern Future Internationals Academy

### **Swimming**

Josh Herron, Mark Emerson and Daniel

McDowell competed in the Ulster Short Course Championships. Daniel McDowell competed in the Final of the 100m Freestyle.

### **Archery**

Ethan McKinney and Edward Teggart competed at the NI Schools Archery Championships held at Campbell College, Belfast.

### **Dance**

PC Dance Team were awarded 1st place in Creative Movement (Large Team), 2nd in Dance (Large Team) and Rhianna Stewart 2nd in Creative Movement (Individual) at the Lisburn Festival of Dance.

They also won 1st place at the Modern Dance Festival Schools Cup held in Ballymena

### **Table Tennis**

Tom Colvin continued to excel last year winning the U19 Ulster Open Championship, the U21 Mens Irish National Championship and the U19 Boys Singles Oster Cup (held in Germany).

### **Representative Honours**

Tom Colvin – Ireland U21 Squad (European Team Championships)



# Portadown College Prize Day Celebrations, 27 October 2023







The Portadown College community was delighted to gather in the splendid setting of St Mark's Church of Ireland, Portadown, for its Prize Day 2023 on 27 October. Central to this special occasion was a celebration of PC's core values:

- nurturing the individual;
- respecting ourselves and others;
- serving our local and global community;
- encouraging lifelong learning.

On behalf of guests, the College Chairman, Mr Peter H Aiken, extended a warm PC welcome to Guest of Honour and past student, Mr Peter Cardwell, formerly a special adviser in the UK Government and currently the Political Editor of TalkRadio. In a refreshingly honest and witty address, Peter inspired the audience with his reflections on the value of success in all aspects of life, not purely academic.

The audience was uplifted by a variety of marvellous musical pieces conducted by Head of Music, Mrs Linda Doogan, and performed by the College orchestra, choir and chamber choir respectively.

During an afternoon of celebration which showcased the praiseworthy achievements of the GCSE, AS and A Level 2023 cohorts, Principal Gillian Gibb spoke about PC's pride at the range of achievements, individual and collective, secured by students during what she described as a "truly vintage year for PC", with the College's young people "bringing home trophies and accolades galore across a myriad of disciplines."

# Examination Results

## GCSE Results 2023

	% ACHIEVING A* - C	
% entered for 5 or more subjects	7+	5+
100	97.7	100

## GCSE Level Results 2023 (comparative with NI Average)

% GRADES	SCHOOL	NI AVERAGE
%A* - C	97.7	86.6
%A* - B	76.5	57.5
%A* - A	46.7	35.4
%A*	14.4	10.6

## GCSE Summary Results 2021-2023

YEAR	%A* - B	%A* - C
2021	79.1	89.2
2022	84.1	99.5
2023	76.5	97.7

## GCSE Summary Analysis by Subject 2023

Subject	Entries	Number of Pupils Achieving Grades:							%A*-C
		A*	A	B	C*	C	D	E	
Agriculture	21	5	10	4	2	0	0	0	100
Art & Design	32	3	10	13	4	0	2	0	93.8
Biology	164	18	58	64	19	5	0	0	100
BCS	14	4	6	2	1	1	0	0	100
Business Studies	109	13	25	34	25	7	5	0	95.4
Chemistry	127	19	40	23	26	13	5	1	95.3
DT Multi-Media	49	11	11	16	9	2	0	0	100
DT Prog	24	4	9	4	4	0	1	2	87.5
Drama	8	0	3	4	1	0	0	0	100
English Language	220	32	73	69	38	7	1	0	99.5
English Literature	220	25	69	85	29	11	1	0	99.5
Food & Nutrition	100	6	23	26	29	13	3	0	97
French	37	3	12	6	7	8	1	0	97.3
Geography	104	23	39	33	4	4	1	0	99
History	82	14	26	25	16	1	0	0	100
LLW	49	1	13	20	12	2	1	0	98
Mathematics Further	56	18	19	10	7	2	0	0	100
Mathematics	220	34	82	86	11	7	0	0	100
Moving Image Arts	15	0	6	3	5	1	0	0	100
Music	16	6	3	4	3	0	0	0	100
Physics	97	15	36	35	11	0	0	0	100
Religious Studies FC	197	42	65	35	32	11	8	0	93.9
Religious Studies SC	21	2	5	3	3	4	3	1	81
Science Single Award	28	2	13	10	3	0	0	0	100
Spanish	29	2	4	7	10	5	1	0	96.6
Sport/PE	76	4	20	13	21	9	9	0	88.2
Technology	59	6	23	15	11	3	1	0	98.3

*A synopsis of examination results can be viewed on our examination results page on the College Website.*



# GCSE Curriculum Guidance

## College Curriculum

Portadown College offers a broad, balanced and relevant curriculum to encompass the needs, interests and aptitudes of individual students as well as of our economy. An appropriate emphasis is placed on Games, Physical Education, Careers Education, Citizenship and Personal and Social Development through the curriculum and the wide range of extra-curricular activities on offer in the school.

The College respects the right of parents/carers who wish to withdraw students from collective worship.

## Key Stage 4 Year 11

The majority of students entering Year 11 in September 2024 will study 9 full course subjects leading to GCSE awards at the end of Year 12.

Students who apply for and are allocated a place to study Further Mathematics will complete 10 GCSE subjects.

All students are required to study at least one Science option. To meet this requirement, students can study one, two or all three of the separate Sciences (i.e. Biology, Chemistry and Physics) or study Single Award Science only instead.

## Compulsory Subjects

English Language

Mathematics

Physics or Chemistry or Biology or Single Award Science

English Literature

Religious Studies

## Option Subjects

\*Agriculture and Land Use

Biology

\*Business Studies

\*Digital Technology Multimedia

\*Drama

French

Geography

History

\*Moving Image Arts

\*Physical Education

Single Award Science

Technology and Design

Art & Design

\*Business Communication Systems

Chemistry

\*Digital Technology Programming

Food and Nutrition

\*\*Further Mathematics

Health and Social Care

\*Learning for Life and Work

Music

Physics

Spanish



Subjects marked \* can be taken as GCSE options without prior experience at Key Stage 3.

\*\* Any Year 10 student wishing to take GCSE Further Mathematics will be required to sit a Mathematics assessment for selection for the course. The assessment will take place in the College following confirmation that a student has secured a place in the College.

Please note: the GCSE curricular offer is correct at the time of publication. As such, it may be subject to change and verification.

- Some restrictions on students taking particular subjects may be required if the subjects are over or undersubscribed. We endeavour to facilitate individual choice. However, this is not always possible.
- If a subject is oversubscribed, places will be allocated based on the order of preference on the subject choice form. Where places are tied, the allocation will be based on available Key Stage 3 data.
- The offer and delivery of a subject may be withdrawn should student uptake not be viable.



# Agriculture & Land Use

## Examination Board: CCEA

What will I study and how will I be assessed?

What can this subject lead to?

The Agri-Food industry contributes hugely to the local economy representing employment for around 50,000 people in farms, factories and the Agri-Food sector. Several prominent Agri-Food businesses are located in the Portadown area. It also develops skills necessary for A Level Science study.

CONTENT	ASSESSMENT	%
Unit 1 Soils, Crops and Habitats	External Examination	25%
Unit 2 Animals on the land	External Examination	25%
Unit 3 Controlled Assessment	Controlled Assessment: Planning and Investigation Research and Presentation	50%

### What is this subject about?

Agriculture & Land Use is designed to appeal not only to young people from the changing agricultural sector but also those who are interested in working within the wider land-based and environmental industries. This is an applied course which has been designed to motivate students to take charge of their own learning and to develop knowledge and practical skills in agriculture and other land use. It is designed for those who have an interest in Agriculture, Horticulture, Veterinary Science or other Land-Based careers.

Those who do the course need to have a willingness to participate in Field Trips, handle small/farm animals and work with plants, soil and garden tools.





# Art & Design

## Examination Board: CCEA

What will I study and how will I be assessed?

What can this subject lead to?  
This course prepares students for the study of Art & Design and related courses at A Level and beyond. It also provides students who have an interest in developing a career in Art & Design with relevant, skills-based knowledge. Possible Careers include Media, Graphics, Web Design, Architecture, Textile Design, Fashion, Buying, Interior Design, Teaching and Art Therapy.

CONTENT	ASSESSMENT	%
Component 1 Part A: Exploratory Portfolio	Part A: Controlled assessment Internally set and assessed Externally moderated	60% Part A: 25% 50 marks
Part B: Investigating the Creative and Cultural Industries	Part B: Controlled assessment Internally set and assessed Teacher sets tasks based on examples from controlled assessment booklet which is set by CCEA Externally moderated	Part B: 35% 70 Marks
This is a linear qualification		
Component 2: Externally Set Assignment	Controlled Assessment Externally set examination Internally assessed Externally moderated A stimulus paper is set by CCEA. This provides a choice of theme starting points	40% 80 Marks

### What is this subject about?

Students of GCSE Art & Design engage in a critical, practical and theoretical study of Art & Design. They develop an appreciation of the work of artists, designers and craft workers from a range of cultural backgrounds. Students can also develop their artistic creative practice through a wide range of exciting media and processes.



# Biology

## Examination Board: CCEA

What will I study and how will I be assessed?

What can this subject lead to?  
Studying Biology at GCSE can lead to A Level which opens up a vast range of careers including medicine, dentistry, veterinary science, agriculture, biosciences, ecology, forensics, genetics, marine biology and entomology among others.

CONTENT	ASSESSMENT	%
Unit 1 Cells, Living Processes and Biodiversity	External Examination 1 hour 15 mins	35%
Unit 2 Body Systems, Genetics, Microorganisms and Health	External Examination 1 hour 30 mins	40%
Unit 3 Practical Assessment	Booklet A (7.5%) Two externally marked pre-release practicals in Year 12 Booklet B (17.5%) External written examination on practical work 1 hour	25%

### What is this subject about?

Biology has the greatest factual content of the three sciences and involves a substantial mathematical component. It includes a study of Plant and Animal Biology along with ecology, genetics and micro-organisms. Students considering doing A Level Biology are strongly advised to take GCSE chemistry and for A Level Life and Health Science must have studied GCSE Chemistry.



# Business Communication Systems

## Examination Board: CCEA

What will I study and how will I be assessed?

What can this subject lead to?

A unique qualification, BCS will provide students with the opportunity to gain an insight into both the Business and Digital World. Students will

learn about the Business environment and acquire transferable digital skills in a range of software applications which are useful in many careers.

There are many career opportunities both directly in Business and IT, as well as areas such as Digital Marketing, Project Management and Web Development. Students can further their studies in this subject area at A-level by choosing to study CCEA A Level in Digital Technology and/or Business Studies.

CONTENT	ASSESSMENT	%
<b>Unit 1: Software Applications for Business</b> Students will use a range of applications including: spreadsheets, databases, web development, email, internet, word processing and presentations.	External computer based examination 2 hours	40%
<b>Unit 2: The Business Environment</b> Recruitment, selection, training, marketing and implications of digital technology for business. Students consider different roles, including stakeholders and customers, as well as how best to communicate a message.	External Examination 1 hour	35%
<b>Unit 3: Developing Digital Solutions</b> A practical unit where students use the skills they have developed in the previous units to plan and develop a digital solution for a business.	Controlled Assessment	25%

What is this subject about?

This subject provides students with the opportunity to explore the links between the business and digital world in one qualification. Digital technologies play a pivotal role in business and economic activities and this exciting qualification provides a perfect blend.



# Business Studies

## Examination Board: CCEA

What will I study and how will I be assessed?

What can this subject lead to?  
There are many career opportunities both directly in business, as well as areas such as marketing, management, accountancy and research. Students can go on to study A level Business Studies and then a range of business related courses at university. These include opportunities to combine business with a foreign language.

CONTENT	ASSESSMENT	%
Unit 1: Starting a business <ul style="list-style-type: none"><li>• Creating a business</li><li>• Business operations</li><li>• Marketing</li></ul>	External Examination 1 hour 30 mins	40%
Unit 2: Developing a business <ul style="list-style-type: none"><li>• Finance</li><li>• Human resources</li><li>• Business Growth</li></ul>	External Examination 1 hour 30 mins	40%
Unit 3: Planning a business	Controlled Assessment Students complete a research task and write up a report based on this research	20%

### What is this subject about?

Business Studies is an investigation into how businesses work, make their decisions and the influences that shape this process. It looks at how businesses are formed, how they produce their goods and services and how they market these to customers. In addition it examines how businesses are funded, the management and motivation of people, how they grow and what is meant by a business plan. Business studies is suited to students who have a keen interest in the world about them, how businesses work and those who have desire to become entrepreneurs themselves. It will develop good skills in literacy and numeracy – as there is a need to construct business reports and handle financial data; working with others – research tasks, communication and use of ICT.





# Chemistry

## Examination Board: CCEA

What will I study and how will I be assessed?

What can this subject lead to? Chemistry can lead to a wide variety of rewarding careers including medicine, dentistry, veterinary medicine, pharmacy, engineering, research and food science.

Students who are interested in studying Chemistry or Life & Health Sciences at A Level need to sit all GCSE Chemistry units at Higher Tier.

CONTENT	ASSESSMENT	%
Unit 1 Structures, Trends, Chemical Reactions, Quantitative Chemistry and Analysis	External Examination 1 hour 15 mins	35%
Unit 2 Further Chemical Reactions, Rates and Equilibrium, Calculations and Organic Chemistry	External Examination 1 hour 30 mins	40%
Unit 3 Practical Skills	Booklet A (7.5%) Two externally marked pre-release practicals in Year 12  Booklet B (17.5%) External written examination on practical work 1 hour	25%

## What is this subject about?

Chemistry is a challenging subject requiring serious study. While Chemistry requires understanding and recall of specific scientific facts, students are also expected to be able to conduct experiments and interpret observations in terms of scientific principles and to carry out relevant calculations. Students are encouraged to develop their curiosity about the material and physical worlds and the course provides insight into and experience of how science works. It also enables students to engage with Chemistry in their everyday lives and to make informed choices both about further study in Chemistry and their careers.



# Digital Technology Multimedia

What can this subject lead to?

Digital Technology is a creative and practical subject which will empower students. A subject where students will develop transferable skills in problem-solving, communication and collaboration. This course will provide students with a solid Digital Technology qualification at GCSE level which they can then further at Key Stage 5. It opens an infinite range of careers, such as; Data Scientists, Mobile App Developer, Artificial Intelligence, Web Developer and Cloud Engineer.

## Examination Board: CCEA

What will I study and how will I be assessed?

CONTENT	ASSESSMENT	%
Unit 1:Digital Technology Digital Data, Computer Hardware, Network Topologies, Spreadsheet applications, Cyperspace, Cloud Technology and Digital applications.	External Examination 1 hour	30%
Unit 2:Digital Authoring Concepts HTML, database development, multimedia design and testing.	External Examinationn 1 hour 30 mins	40%
Unit 3:Digital Authoring Practice A practical unit where students will create an interactive website and a database system.	Controlled Assessment	30%

## What is this subject about?

Digital Technology is rapidly expanding and changing the way people live, learn and work. This skills-based course will develop your aptitude in applications such as website and database development. You will also study a range of exciting subjects, such as, Big Data, Cloud Computing and Cyber Security.



# Digital Technology Programming

## Examination Board: CCEA

What will I study and how will I be assessed?

What can this subject lead to?  
Students will acquire transferable skills in a range of development environments which can be applied to almost any occupation, including research, investigation, analysis, communication skills, problem solving and working with others. Students can further their studies by choosing either the WJEC A Level in Computer Science or CCEA A Level in Digital Technology.

CONTENT	ASSESSMENT	%
Unit 1: Digital Technology Digital Data, Computer Hardware, Network Topologies, Spreadsheet applications, Cyberspace, Cloud Technology and Digital applications	External Examination 1 hour	30%
Unit 2: Digital Development Concepts Data representation, algorithms, programming constructs, simple error and handling techniques and contemporary trends in software development	External Examination 1 hour 30 mins	40%
Unit 3: Digital Development Practice A practical unit where students are given the opportunity to design, develop and test code solutions using a programming language	Controlled Assessment	30%

### What is this subject about?

Software controls every computer system function in the world. The ability to write computer programs in languages that are used widely in the industry is one of the most valuable skills to have in the world today. This course will give students a real, in-depth understanding of how computer technology works.



# Drama

Students can follow a design pathway which includes **no** performances in either practical component. They can choose from: Costume, Lighting, Multimedia, Sound or Set.

## Examination Board: CCEA

What will I study and how will I be assessed?

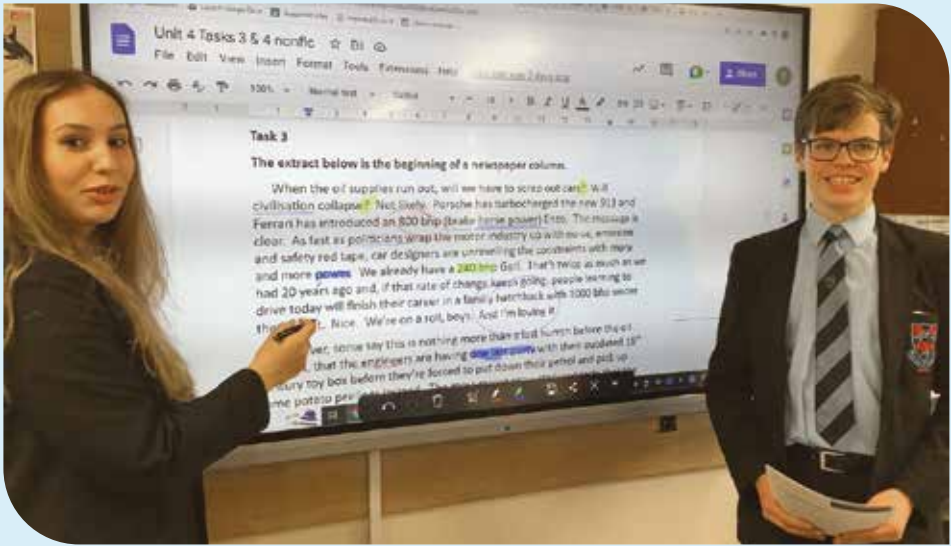
**What can this subject lead to?**  
Students can study Drama and Theatre at A Level. A joint degree in English and Drama is a regular choice for students at university. The skills and confidence acquired during the course are transferable and students have gone on to have a wide range of careers which have some link back to the course. These include law, public relations, teaching, arts administration, publishing and technical support in the theatre.

CONTENT	ASSESSMENT	%
Component 1: Devised Performance Group performance of devised drama with accompanying candidate log Candidates will choose a performance or design pathway for this component	Controlled Assessment with pre-release stimulus material Internally assessed, externally moderated through digital submission and candidate log	AO1 – 15% AO4 – 10% Total 25%
Component 2: Scripted Performance Group performance of scripted drama Candidates will choose a performance or design pathway for this component	Controlled Assessment Internally assessed, externally moderated through visiting moderation	AO1 – 5% AO2 – 30% Total 35%
Component 3: Written Examination on a set text	External Assessment 1 hour 30 mins	AO3 – 30% AO4 – 10% Total 40%

### What is this subject about?

No experience of Drama is necessary in order to study it at GCSE Level. Key skills include: creativity, working with others, problem-solving, communication, negotiation, self-discipline, time-management, setting deadlines and meeting targets. Drama students should learn to understand the practical components of the theatre and develop the ability to understand and respond to a wide range of dramatic productions. Opportunities to visit the theatre help to develop a lifelong interest in drama.





# English Language

## Examination Board: CCEA

What will I study and how will I be assessed?

What can this subject lead to?

Competency in English Language is foundational to success in all careers. Studying English Language enhances the inter-personal skills necessary in every profession ranging from public relations, media communications, legal services, corporate management, the service and entertainment industries to allied health professions.

CONTENT	ASSESSMENT	%
Unit 1: Writing for Purpose and Audience and Reading to Access Non-Fiction and Media Texts	External Examination Untiered 1 hour 45 mins Students respond to five tasks	30%
Unit 2: Speaking and Listening	Controlled Assessment Untiered	20%
Unit 3: Studying Spoken and Written Language	Controlled Assessment Untiered	20%
Unit 4: Personal or Creative Writing and Reading Literary and Non-Fiction Texts	External Examination Untiered 1 hour 45 mins Students respond to four tasks	30%

### What is this subject about?

Students studying English Language will benefit personally through opportunities to express their opinion, assume leadership and work as part of a team, all of which will nurture self-esteem, confidence and empathy. They will acquire a range of skills transferable to the workplace such as effective oral and written communication.



# English Literature

## Examination Board: CCEA

What will I study and how will I be assessed?

What can this subject lead to?  
Many who study English Literature progress to English Literature at A Level which opens opportunities to careers in the creative industries such as writing, film studies, publishing, acting, journalism, broadcasting and the arts. Other pathways include law, finance, health, civil service, marketing, human resources and management.

Skills enhanced in the study of English Literature include communication, selection, synthesis, analysis and empathy.

CONTENT	ASSESSMENT	%
Unit 1: The Study of Prose	External Examination 1 hour 45 mins Students answer two questions Section A is closed book	30%
Unit 2: The Study of Drama and Poetry	External Examination 2 hours Students answer two questions Section A and B are open book	50%
Unit 3: The Study of Shakespeare	Controlled Assessment 2 hours Students complete an extended writing question based on a theme	20%

What is this subject about?  
English Literature fosters a life-long enjoyment of prose, drama and poetry through creative and critical engagement with a range of texts. It also develops a range of skills such as the ability to think independently, research, plan, and reason coherently. Opportunities for cultural outings enhance engagement with literature while highlighting the importance of the arts in the business and economic sectors.



# Food & Nutrition

## Examination Board: CCEA

What will I study and how will I be assessed?

What can this subject lead to?  
This subject will empower students; help them to develop as individuals, as contributors to society, to the economy and the environment. In addition, this GCSE provides students with academic excellence and is successful in preparing students for Key Stage 5 education, attendance at universities and the world of work. This qualification will give the student the preparation they need to succeed in the food, health and hospitality industries, to name a few, as well as giving them vital life skills.

CONTENT	ASSESSMENT	%
Component 1 Food and Nutrition	External Examination	50%
Component 2 Practical Food and Nutrition	Controlled Assessment: <ul style="list-style-type: none"><li>• Research &amp; Viewpoints</li><li>• Justification of choice</li><li>• Planning</li><li>• Practical activity</li><li>• Evaluation</li></ul>	50%

### What is this subject about?

Students will learn about the nutritional content of foods and specific nutritional needs within a multicultural society, reflecting current government guidelines. They will also study how to be an effective consumer in relation to food choice, food safety and managing resources. Technological and scientific developments within the food industry will be explored.

Students will be provided with opportunities to apply their knowledge to 'real-life' contexts and to develop their confidence in demonstrating high level food practical skills. Skills and capabilities will be developed including communication, ICT, problem solving, self-management, working with others, managing information and creativity.



# French

Students may choose a Modern Language GCSE which they have previously studied to a suitable level. However, where this is not the case, interested students should contact the Head of Department to discuss options. It is also possible to choose more than one language.

What can this subject lead to?

French is globally recognized as a language of culture and business and your skills will be seen as a real asset. GCSE French can help students take their place in a multilingual global society through a wide range of enhanced career opportunities at home and on an international level. You will lay the foundations for studying French at A-Level, at university or beyond. You may even choose to study a new language and a GCSE will open the door to that opportunity. You will enjoy future travel and cultural experiences in French-speaking countries even more with the skill to communicate in the language.

## Examination Board: CCEA

What will I study and how will I be assessed?

CONTENT	ASSESSMENT	%
Unit 1: Listening	External Examination	25%
Unit 2: Speaking	One teacher facilitated and externally marked speaking examination	25%
Unit 3: Reading	External Examination	25%
Unit 4: Writing	External Examination	25%

## What is this subject about?

GCSE French is for students who want to develop their existing language skills and become more confident at communicating in and understanding French. This course will help students discover and enjoy learning about the culture of French-speaking countries and communities. There is the possibility of a visit to a French-speaking country, as well as other trips connected to learning French. GCSE French is a challenging and dynamic course that will develop your problem-solving and research skills, improve your memory and broaden your cultural awareness.





# Further Mathematics

## Examination Board: CCEA

Admission to GCSE Further Mathematics is through the Year 10 Further Maths Assessment. Please see the College website under Parents/Policies & Documents for more details.

What will I study and how will I be assessed?

What can this subject lead to?

Further Mathematics allows students to access the knowledge and develop the skills for the study of subjects such as sciences, geography, business, economics and technology. This will lead many of them to careers in science, engineering, finance and accounting.

CONTENT	ASSESSMENT	%
Unit 1: Pure Mathematics Algebra, trigonometry, logarithms, matrices, differentiation & integration.	External Examination With calculator 2 hours	50%
Unit 2: Mechanics Kinematics, vectors, forces, Newton's laws & moments.	External Examination With calculator 1 hour	25%
Unit 3: Statistics Location and dispersion, probability, binomial distribution, normal distribution, bivariate analysis.	External Examination With calculator 1 hour	25%

What is this subject about?

This is a subject developed for high-attaining students who wish to broaden their mathematical experience. The course provides the essential foundation for study of A Level Mathematics and is also a very useful subject for those students wishing to study A Level Physics.



# Geography

## Examination Board: CCEA

What will I study and how will I be assessed?

What can this subject lead to?  
Geography students are highly employable as Geography develops a broad range of skills relevant to a wide range of career options including Geographical Information Systems, planning, environmental science, risk management and resource management. Geographers are also highly regarded in the areas of teaching, social work, law, journalism and human resources.

CONTENT	ASSESSMENT	%
Unit 1: Understanding our Natural World Rivers Coasts Weather and Climate Restless Earth	External Examination 1 hour 30 mins	40%
Unit 2: Living in Our World Population and Migration Changing Urban Areas Contrasts in World Development Managing Our Environment	External Examination 1 hour 30 mins	40%
Unit 3: Fieldwork Skills and Techniques	External Examination 1 hour	20%

### What is this subject about?

GCSE Geography is a current, relevant and engaging subject which allows students to develop a greater knowledge and understanding of both physical and human environments. By studying Geography, students learn about the importance of sustainable development in today's ever changing world, as well as developing skills in literacy, numeracy, graphicacy and oral presentation. Fieldwork includes visits to Newcastle, Titanic Quarter and Portadown Town Centre. The department runs optional school visits abroad and in the past, these have included trips to Paris, Rome, Barcelona and Munich.



# Health & Social Care

## Examination Board: CCEA

What will I study and how will I be assessed?

What can this subject lead to?  
Students will develop knowledge, understanding and skills such as, critical, and analytical decision making and problem solving, required for working in the areas of health, social care and early years. They will build on the skills and capabilities developed at Key Stage 3; and have opportunities to engage actively to develop as effective and independent students. Working with others, communicating orally and in written form, planning learning, meeting deadlines and the ability to work independently will be experienced. Entering the world of work, progression to a range of vocational and academic courses tailored to meet students' needs are all opportunities.

CONTENT	ASSESSMENT	%
Unit 1 Personal Development, Health and Well-Being	External written examination 1 hour 30 mins 100 marks	60%
Unit 2 Working in the Health, Social Care and Early Years Sectors	Controlled assessment. Students write 5000 words on a CCEA set task. 100 marks Internal Assessment CCEA Moderation	40%

### What is this subject about?

Students learn about human development through the main life stages and age ranges; factors affecting health and development, including behavioural, environmental, physical and socio-economic factors; how relationships influence social and emotional development; how a range of factors influence self-concept; major life changes and sources of support.

How health and social care services meet a range of service users' needs; barriers to health and social care services and how they can be overcome; job roles of a range of practitioners and how they apply the values of care in their day-to-day work; and the importance of safeguarding in health, social care and early years settings, will be studied.



# History

## Examination Board: CCEA

What will I study and how will I be assessed?

What can this subject lead to?

History is highly regarded by universities and employers alike. It develops skills of critical thinking, reasoning and debate which are sought after and valued in the workplace. History provides many career options including accountancy, law, the media, teaching, sport and business.

CONTENT	ASSESSMENT	%
Unit 1 Modern world studies in depth: Life in Nazi Germany 1933-1945 Local Study: Changing Relations: NI 1965-1998	External Examination 1 hour 45 mins	60%
Unit 2 Outline Study: International Relations 1945-2003	External Examination 1 hour 15 mins	40%

What is this subject about?

GCSE History covers a number of topics; from Hitler's Germany to the Troubles in NI and Superpower relations from World War Two until the end of the Cold War. A range of skills are developed including the ability to communicate in both oral and written form, to work with others, to listen to and accept differing views, to extract information from a range of source materials and to reason and present organised and supported arguments.





# Learning for Life & Work

## Examination Board: CCEA

What will I study and how will I be assessed?

What can this subject lead to?  
Whilst there is no A level in this subject, a number of areas relate to other subjects such as Government and Politics (from Citizenship), Health and Social Care (from aspects of personal development) and Business Studies (from Employability). There is a large focus on key transferable skills such as working with others, communication, literacy and use of ICT involved in the subject as well as skills in money management and preparation for the world of work.

CONTENT	ASSESSMENT	%
Unit 1: Local and Global Citizenship	External Examination 1 hour	20%
Unit 2: Personal Development	External Examination 1 hour	20%
Unit 3: Employability	External Examination 1 hour	20%
Unit 4: Controlled Assessment Task (Investigation)	Students complete one task from a choice of three. The task is based on investigating a topic in one of the following units: 1. Local and Global Citizenship 2. Personal Development; or 3. Employability	40%

### What is this subject about?

Aimed at students who have an interest in developing key life skills, enjoy group work and active learning and the completion of projects based on individual and group research. This course provides students with the skills they require to think independently, make informed decisions, and take appropriate action when faced with personal, social, economic and employment issues.



# Mathematics

## Examination Board: CCEA

What will I study and how will I be assessed?

What can this subject lead to?

This subject is a necessary numeracy qualification for all students.

A grade C or above will be an essential requirement for entry

to further courses of study and future employment. If a student

obtains an A grade in GCSE Mathematics, from modules M4 and M8, they may proceed

to study A Level Mathematics. A number of other A Level courses will require a grade B in GCSE Mathematics.

CONTENT	ASSESSMENT	%
Unit M3 or Unit M4	Written Examination – 1 paper Calculator Paper: 2 hours	45%
Unit M6 or M7 or M8	Written Examination – 2 papers Non-calculator paper: 1 hour 15 minutes Calculator paper: 1 hour 15 minutes	55%

Each unit contains elements of Number and Algebra, Geometry and Measures and Handling Data.

### What is this subject about?

This is a core subject which enables students to use mathematics as a tool for learning across the curriculum. Students will develop the knowledge and skills necessary for the application of concepts in a practical context. They will use their skills of logic and reason to solve problems.



# Moving Image Arts<sup>(MIA)</sup>

## Examination Board: CCEA

What can this subject lead to?  
This linear course provides a solid foundation for progression to GCE AS/A2 Moving Image Arts, other subject-related qualifications, vocational training and employment within the creative industries.

What will I study and how will I be assessed?

CONTENT	ASSESSMENT	%
Component 1 Critical Understanding of Creative and Technical Moving Image Production	Compulsory online examination 1 hour 30 mins	40%
Component 2: Acquisition of Skills in Moving Image Production	Compulsory controlled assessment tasks	20%
Component 3: Planning and Making A Moving Image Product	Compulsory controlled assessment portfolio: a live-action or animated film.	40%

What is this subject about?  
GCSE Moving Image Arts is one of the most exciting and current subjects on the curriculum. Students study the practical and theoretical processes of film making and enjoy experimenting with film making techniques and processes. You will have the opportunity to work on a range of tasks, including planning and creating moving image products.



# Music

## Examination Board: CCEA

What can this subject lead to?

GCSE Music is a pre-requisite for the study of Advanced Level Music.

The study of Music strengthens one's ability to listen critically, evaluate, research, appreciate the value of context, analyse, apply technology, compose, present and perform. All these skills are transferable to many careers not specifically related to Music (for example, research based careers and administration). Specific music related careers include performing, composing, arranging, arts administration, concert hall management, promotion of the arts, recording industry, music therapy, classroom teaching, peripatetic teaching, television and radio presenting and researching.

What will I study and how will I be assessed?

CONTENT	ASSESSMENT	%
Component 1 Performing and Appraising	1 solo, 1 ensemble, viva voce – visiting examiner	35%
Component 2 Composing	Controlled Assessment 2 compositions written over 25 hour time period	30%
Component 3 Listening and Appraising	External Examination 1 hour 30 mins listening paper	35%

What is this subject about?

GCSE Music is a subject suited to the Student who has a passion for Music, for understanding how it works and an open mind to exploring new styles. It is also a subject that requires students to already have practical experience of Music through performing and reading music notation.

Students will continue to develop instrumental or vocal performing skills through their private or EA tutors, striving for a minimum of grade 4. Ensemble skills will be introduced at this stage and students will learn how to perform in a group situation and appraise their work. In the classroom students will learn the theory of music which will ultimately develop their composing and listening skills, allowing them to create and understand how music works. Set pieces drawn across 400 years of musical history gives students a broad overview of Classical and popular musical styles, leading to an appreciation of music and laying the foundation for further study. The study of GCSE Music develops useful skills such as creativity, analysis, confidence, discipline, problem solving and communication.





# Physical Education

## Examination Board: CCEA

What will I study and how will I be assessed?

What can this subject lead to?  
GCSE PE opens doors in a variety of areas. The natural progression may be to study PE at A Level and a number of students follow university courses in Sport Science, Physical Education and similar disciplines. PE students have also followed careers in the Health Sciences, Education and Management whilst others have specialised in areas such as Sports Psychology, Strength and Conditioning and Sports' Therapy.

CONTENT	ASSESSMENT	%
Component 1 Factors Underpinning Health and Performance	External Examination  1 hour 15 mins	25%
Component 2 Developing Performance	External Examination  1 hour 15 mins	25%
Component 3 Individual performances in Physical Activities and Sports	Students perform three physical activities or sports from the list provided by CCEA	50%

### What is this subject about?

GCSE PE is aimed at both students who are keen to discover the benefits of leading a balanced healthy lifestyle and also those who wish to develop peak physical performance in their chosen sports. There are plenty of opportunities to perform practically throughout the course and students are encouraged to try new sports and activities as well as to monitor their own lifestyle profile. Students have an opportunity to coach and officiate in addition to taking part in a 2 day Orienteering Course at Gosford Forest Park in

June of Year 11



# Physics

## Examination Board: CCEA

What will I study and how will I be assessed?

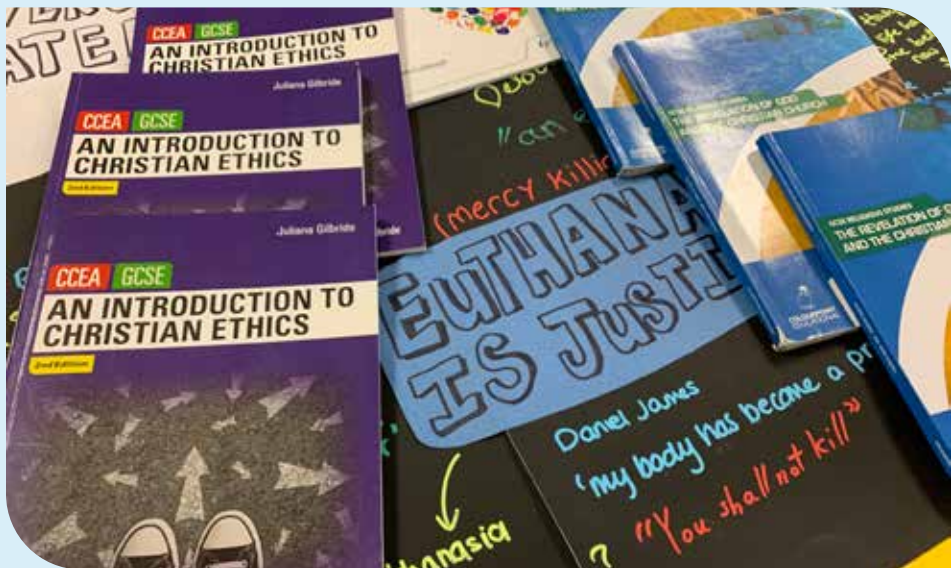
What can this subject lead to?

The career opportunities using Physics are almost infinite. You might want to pursue a career in science, the media, education, business or a host of other fields and Physics can help give you the edge by providing a good initial training. Physics students pursue academic and industrial research, working in Physics-based industries such as electronics, alternative energy development or communications, and the critical and growing area of Medical Physics.

CONTENT	ASSESSMENT	%
Unit 1: Motion, Forces, Moments, Energy, Density, Kinetic Theory, Radioactivity, Nuclear Fission and Fusion	External Examination	37.5%
Unit 2: Waves, Light, Electricity, Magnetism and Electromagnetism and Space Physics	External Examination	37.5%
Unit 3: Practical Skills	Practical Assessment task (in class)	7.5%
	Practical Applications Written Examination	17.5%

What is this subject about?

From the smallest parts of the human body to the great clusters of galaxies, Physics helps us understand how our universe works. A typical Physics student is confident both numerically and practically and loves to get to grips with how things work. This GCSE course encourages students to develop their curiosity about the physical world and provides insight into and experience of how science works. So, if you have an enquiring mind, enjoy a challenge and like solving problems, studying Physics can give you the best chance of success.



# Religious Studies

## Examination Board: CCEA

What will I study and how will I be assessed?

What can this subject lead to?

Religious Studies is an excellent preparation for a wide range of university courses. It develops the skills to analyse and assess

arguments, and to reflect, discuss and debate the fundamental issues (i.e. 'the big questions').

The skills learnt are essential for any future education or employment.

The application of philosophical and ethical ideas to practical moral issues (like abortion, euthanasia or holy war) can be especially relevant for those considering careers in law, the media, business and teaching or medicine.

CONTENT	ASSESSMENT	%
Unit 3 The Revelation of God and the Christian Church	External Examination 1 hour 30 mins	50%
Unit 6 An Introduction to Christian Ethics	External Examination 1 hour 30 mins	50%

What is this subject about?

Religious Studies explores key events in the life of Jesus and examines their implications for today. It covers beliefs and practices within the Christian Church. Students will consider a range of important ethical issues including euthanasia, capital punishment, bioethics, war and peace and abortion. Religious Studies enables students to get a broad look at how religion and spirituality impact on the world we live in. It helps students develop marketable skills and aptitudes including analytical and strategic thinking, the ability to work with abstract ideas and problem-solving skills. Student learning in the subject has been greatly enhanced through study trips to Auschwitz and Rome.



# Single Award Science

## Examination Board: CCEA

What will I study and how will I be assessed?

**What can this subject lead to?**  
This GCSE is intended for breadth of study rather than depth. It provides useful skills for general A Level study such as working with data, problem solving, investigating methods and drawing conclusions. It does not adequately prepare for the study of Biology, Chemistry or Physics at A Level, however, Single Award Science students may continue studying Science to A Level by selecting the new Life & Health Sciences course.

CONTENT	ASSESSMENT	%
Unit 1: Biology	External Examination 1 hour	25%
Unit 2: Chemistry	External Examination 1 hour	25%
Unit 3: Physics	External Examination 1 hour	25%
Unit 4: Practical Skills	Booklet A (7.5%) Two externally marked pre-release practicals in Year 12  Booklet B (17.5%) External written examination on practical work. 1 hour 15 mins	25%

### What is this subject about?

Single Award Science can be taken instead of one of the separate sciences (Biology, Chemistry or Physics). The course incorporates some aspects of Biology, Chemistry and Physics with particular emphasis on applying Science to the world around us. It does not cover some of the more demanding areas from the separate Science specifications and involves less Mathematics than those courses. Single Award Science is for students who do not wish to specialise in one particular area of Science, have limited interest in Science and who do not see themselves taking on any of the separate Science subjects at A Level. It therefore allows students to fulfil the requirement to study one Science subject at GCSE and to meet the criteria of universities that ask for a GCSE in Science, while also leaving students with more options for studying different areas of the curriculum. It does allow progression to Life and Health Sciences at A Level as long as all GCSE Single Award Science units are taken at Higher Tier.





# Spanish

Students may choose a Modern Language GCSE which they have previously studied to a suitable level. However, where this is not the case, interested students should contact the Head of Department to discuss options. It is also possible to choose more than one language.

What can this subject lead to?

The global Spanish-speaking population is enormous and rapidly expanding, meaning that employers need Spanish speakers and are more likely to promote and employ those with language skills. This applies to a wide range of jobs across the globe. As well as the possibility of studying Spanish at A Level, you may choose to study Spanish or a new language at university; GCSE is the first step. The ability to communicate in Spanish will also open the door to a world of future travel opportunities and new experiences, making you more confident and independent.

## Examination Board: CCEA

What will I study and how will I be assessed?

CONTENT	ASSESSMENT	%
Unit 1: Listening	External Examination	25%
Unit 2: Speaking	One teacher facilitated and externally marked speaking examination	25%
Unit 3: Reading	External Examination	25%
Unit 4: Writing	External Examination	25%

## What is this subject about?

This is a course for students who want to make real progress in communicating in and understanding Spanish. It will help students discover interesting and unusual aspects of Spanish-speaking countries and cultures. There is the possibility of visiting a Spanish-speaking country and enjoying other language-related trips. This fast-moving course will challenge your individual ability, improve your memory, literacy, team-working and research skills and give you strategies to work out new and unknown language in a variety of contexts.



# Technology and Design

What can this subject lead to?

Studying Technology and Design leads to employment opportunities in Electrical/ Electronic Engineering or Mechanical Engineering, Product or Graphic Design, Structural Engineering/ Civil Engineering, Software Engineering or Web Design, Construction, Architecture, Automotive Engineering and Design, Manufacturing and Industrial Design. Fabrication of Materials –Welding and Construction, Aircraft Industry, Material Engineering or as Electrical Technicians.

## Examination Board: CCEA

What will I study and how will I be assessed?

CONTENT	ASSESSMENT	%
Unit 1: Technology and Design Core Content	External Examination	25%
Unit 2: Optional Areas of Study	External Examination	25%
Unit 3: Design and Manufacturing Project Students complete a design project comprising a design portfolio and an associated manufacturing task.	Controlled Assessment	50%

What is this subject about?

Technology and Design is principally concerned with design and problem solving. The subject places a strong emphasis on mechanical, electrical and pneumatic systems incorporating computer and 3D modelling. Technology and Design also develops product design and manufacturing skills, from carrying out investigations and developing designs leading to the production of a working prototype.



# Life at PC





# History and Politics

## Berlin and Krakow 2023







# Geography and Tourism Trip

## Rome and Sorrento 2023



# Sixth Form Prospectus

## Welcome

Thank you for your interest in our College. It is an exciting place to be; we hope this prospectus gives you an insight into what it means to be a student in our unique school, catering for 14 to 19 year olds.

Portadown College Sixth Form is one of the largest and most successful in Northern Ireland, with a long, well-established and celebrated history of academic success. We are particularly proud of how we have maintained this quality whilst broadening our A Level provision to cater for the needs and interests of a wider range of students.

As you read through our prospectus you will learn more about the wide variety of AS/A2 levels on offer, our breadth of extra-curricular provision and the support and guidance you will receive as a valued member of our College.

In Sixth Form, we recognise and seek to nurture your independence, equipping you with the knowledge, resources and skills required not only for A Level examinations and higher education, but for adult life beyond College too. Our core values of nurturing the individual, respecting ourselves and others, serving our local and global community and encouraging lifelong learning, affirm who we are. We look forward to meeting and working with you.

## Sixth Form Facilities

### THE STUDY AREA

This area has been designed to allow students to undertake assignments, research and homework in a quiet, comfortable working environment which benefits from the supervision of a teacher at all times. This large facility is adjacent to the library and Careers Resource Area.

### SIXTH FORM RECREATIONAL AREA

We are committed to ensuring all our students maximise the opportunities afforded by their academic studies and our enrichment programme. We recognise too the need for Sixth Formers' independence, alongside their practical contribution to College life, through the Prefect Team and Student Voice. A well-equipped, bright, comfortable and modern recreational area for Year 14 students recognises their position as our senior students. Sixth Formers may leave the College at lunchtimes in recognition of their independence and maturity.

## Setting and Achieving Goals

We are judged on examination performance and are happy to celebrate our successes in this area, recognising that examination results are amongst the most important criteria in a student's choice of Sixth Form College. Portadown College has a long, well-established and celebrated history of academic success. We are particularly proud of how we have maintained this quality whilst broadening our A Level provision to cater for the needs and interests of a wider range of students.

## Some comments from Sixth Formers...

*"I've settled in really well and found it easy to make new friends, as everyone is very welcoming."* - Freya Magee

*"The transition from GCSE to A level is difficult but the teachers are really supportive and helpful. There is more time for studying in school which helps to take off the pressure."* - Hannah Mardell.

*"My transition to sixth form was enjoyable as I was able to do subjects I enjoy, meaning the higher work content of the subjects is not as bad."* - Matthew Hobson

# AS/A2 Level Studies At Portadown College

## 2024-2025

### **Your aptitudes, interests & ambitions**

Portadown College offers A Level examinations in both traditional and vocational subjects. Vocational subjects such as Health and Social Care are similar to traditional A Levels, but have stronger links with the world of work. Vocational courses contain a greater proportion of assessment by coursework than traditional ones. A Levels are assessed through a combination of examinations and coursework. In most subjects the examinations carry the significant weight of assessment.

Most students commence with 4 AS subjects, with opportunities to review progress and, where advisable, to reduce the number of subjects to 3 at various stages across their 2 year Sixth Form course.

Given that most universities only require strong grades in 3 A Level subjects, our aim is to be as flexible as possible, allowing students to tailor their curriculum to their career planning.

Subject to demand, availability and the student needs of our partner schools within the Craigavon Area Learning Community, some BTEC courses are also offered in collaboration with the Southern Regional College. Information on these courses will be available at the Year 13 Induction Day in August.



### **Supporting Sixth Formers**

#### **THE TRANSITION FROM GCSE TO A LEVEL STUDY**

We understand that the transition from GCSE to AS and A2 Levels will be challenging for some students. It is therefore our aim to support students in building the coping mechanisms they need to maximise their potential in the form of pastoral support, counselling, time management, planning, guided private study, careers advice and mentoring.

#### **STRETCHING THE MOST ABLE**

We recognise that a small number of our most able students may wish to study 5 AS Levels in Year 13 which they might carry through to A2. Stretching the very able also takes place in a number of other ways:

- Oxbridge preparation;
- enrichment activities;
- Mathematics Challenge UK;
- public speaking competitions;
- subject Olympiads.

#### **FINANCIAL SUPPORT**

Students from families below a certain income threshold are eligible to apply for an Educational Maintenance Allowance (EMA). The financial support gained can be used to help with living and travelling expenses and to buy essential equipment and study materials. Students are required to agree to the conditions of a Learning Agreement as part of their application. Essential textbooks and materials are provided free of charge. Students are expected to pay for voluntary educational visits, and on occasions, they may be asked to subsidise field trips etc. Examination fees are paid by the College whilst re-sits, remarks and recall of scripts are paid for by students.

# CEIAG

## Careers Education, Information, Advice and Guidance

### Sixth Form CEIAG: Course Outline

#### YEAR 13:

Students will study the following modules:

- Careers Calendar and key dates across the 2 years.
- What employers and universities want from applicants.
- Skills, qualities and matching these to jobs/careers.
- Work placement organisation.
- Labour Market Information and impact on choices.
- Post-18 options.
- Further and Higher Education focus.
- Study abroad: Europe, Australia/New Zealand and the USA.
- UCAS applications.

#### YEAR 14:

Students will study the following modules:

- Completing the UCAS and other applications, (including Irish universities).
- Interview preparation.
- Money Sense: Credit, debt and budgeting.
- Job hunting and the application process, (updating CVs, application forms, etc).
- Results day and beyond, (including what to do if it goes wrong).

### Destinations

Most of our young people go on to Higher Education but an increasing number are taking up places on Higher Level Apprenticeships with companies such as Kainos, PWC and Deloitte. The most popular courses include:

- Business
- Engineering
- English
- ICT and Computing
- Medically Related Science
- Nursing
- Pharmacy
- Psychology

### A HIGH STANDARD OF ACHIEVEMENT AT A LEVEL WITH CAREERS SUPPORT

There is no doubt that the transition to third level education and the world of work is made easier if students have applied to appropriate courses and their grades in August match the offers which universities and employers have made. When results are published, a specialist Careers team is here to support students in clearing or deferring applications. The vast majority of our students make this transition seamlessly; however, it is reassuring for them to know support and expertise is available as required.







# AS Results 2023

## AS Level Summary Analysis by Subject - 2023

Subject	Entries	NUMBER OF PUPILS ACHIEVING GRADES:					% A - C
		A	B	C	D	E	
Art & Design	10	5	3	1	1	0	90
Biology	51	34	10	3	4	0	92.2
Business Studies	41	10	19	6	6	0	85.4
Chemistry	46	32	5	7	2	0	95.7
Computer Science	17	3	6	3	3	1	70.6
Digital Technology	16	8	4	3	1	0	93.8
Economics	17	6	4	5	1	0	88.2
English Literature	32	9	9	13	1	0	96.9
French	3	1	1	1	0	0	100
Geography	29	11	4	11	2	1	89.7
Health & Social Care	42	11	26	5	0	0	100
History	53	13	10	21	6	2	83
Life & Health Science	13	4	6	2	1	0	92.3
Mathematics Further	11	8	3	0	0	0	100
Mathematics	56	37	9	7	3	0	94.6
Moving Image Arts	9	4	4	1	0	0	100
Music	6	5	1	0	0	0	100
Nutrition	39	10	10	11	6	2	79.5
Physics	24	17	3	1	1	2	87.5
Politics	44	11	16	11	3	2	86.4
Psychology	26	7	3	4	9	2	53.8
Religious Studies	45	20	8	12	4	1	88.9
Spanish	5	3	1	1	0	0	100
Sports Science	22	8	10	2	1	0	90.9
Technology	12	5	3	3	1	0	91.7
Tourism	2	1	0	1	0	0	100

# A Level Results 2023

A Level Summary Analysis by Subject - 2023								
Subject	Entries	NUMBER OF PUPILS ACHIEVING GRADES:						%
		A*	A	B	C	D	E	% A - C
Art & Design	5	2	1	2	0	0	0	100
Biology	69	5	28	19	11	6	0	91.3
Business Studies	40	6	13	15	5	1	0	97.5
Chemistry	28	1	12	11	2	2	0	92.9
Computer Science	8	2	2	0	2	2	0	75
Digital Technology	18	1	3	5	5	3	1	77.8
Economics	15	3	4	4	3	1	0	93.3
English Literature	12	1	2	4	4	0	0	91.7
French	4	0	3	0	1	0	0	100
Geography	28	2	10	9	4	3	0	89.3
Health & Social Care	33	0	11	15	6	0	1	97
History	33	1	4	16	10	2	0	93.9
Life & Health Science	10	0	3	4	3	0	0	100
Mathematics Further	5	1	2	1	0	1	0	80
Mathematics	45	9	17	11	5	2	1	93.3
Moving Image Arts	5	0	1	3	1	0	0	100
Music	3	2	0	1	0	0	0	100
Nutrition	30	4	15	6	4	1	0	96.7
Physics	17	2	3	4	0	7	0	52.9
Politics	22	1	4	6	10	1	0	95.5
Psychology	24	1	7	11	3	2	0	91.7
Religious Studies	47	3	15	15	11	2	1	93.6
Sports Science	28	2	9	8	9	0	0	100
Technology	6	1	4	1	0	0	0	100
Tourism	8	0	6	2	0	0	0	100



A selection of successful AS Level students – Summer 2023.

### A Level Results 2023

NUMBER OF PUPILS AT A2 LEVEL	% OF PUPILS ACHIEVING	
	3 or more passes at grades A* - C	2 or more passes at grades A* - E
180	80	99.5

### A LEVEL SUMMARY RESULTS 2023 (comparative with NI and UK)

% GRADES	SCHOOL	NI AVERAGE	UK AVERAGE
%A* - E	99.6	98.8	97.3
%A* - C	92.3	87.3	76
%A* - B	74	67.8	53.5
%A* - A	42.2	37.5	27.2
%A*	9.25	11.6	8.9

### A Level Summary Results 2021-2023

YEAR	%A* - E	%A* - C
2021	100	94.4
2022	100	96
2023	99.6	92.3

A synopsis of examination results can be viewed on our examination results page on the College Website



# AS/A2 Courses 2024-2025

**Please note: the A Level curricular offer is correct at the time of publication. As such, it may be subject to change and verification.**

- **Some restrictions on students taking subjects may be required if the subjects are over or undersubscribed. We endeavour to facilitate individual choice. However, this is not always possible.**

**In a subject which is oversubscribed, places will be allocated on the order of preference on the subject form. Where places are tied, allocations will be based on the GCSE mark and tier of entry if applicable.**

- **The offer and delivery of a subject may be withdrawn should student uptake not be viable or for any other reason.**
- **Due to significant specification change across all awarding bodies, the choice of awarding bodies/subject specifications by various departments may be subject to change.**

## AS/A2 Subjects

Art and Design  
Biology  
Business Studies  
Chemistry  
Computer Science  
Digital Technology  
Drama and Theatre  
Economics  
English Literature  
French  
Further Mathematics  
Geography  
Government and Politics  
Health and Social Care  
History  
Life and Health Sciences  
Mathematics  
Moving Image Arts  
Music  
Nutrition and Food Science  
Physics  
Psychology  
Religious Studies  
Spanish  
Sports Science and the Active Leisure Industry  
Technology and Design  
Tourism

## Come and see for yourself

We trust that this prospectus has provided a taste of life at Portadown College. We warmly invite you to come and visit us, meet some students and teachers and be given the opportunity to ask questions and seek advice.

Please do not hesitate to contact the College Office for further information on 028 3833 2439.

### IMPORTANT DATES - 2024

<b>JUNE</b>	External students interested in joining Sixth Form are requested to leave their contact details with the College by Friday 21st June 2024.
<b>AUGUST</b>	GCSE Results available: Thursday 22nd August 2024. (time TBC) external applicants visit the College to discuss admission and subject choice. Portadown College will confirm offers which may be subject to DE approval.

# PC Connect



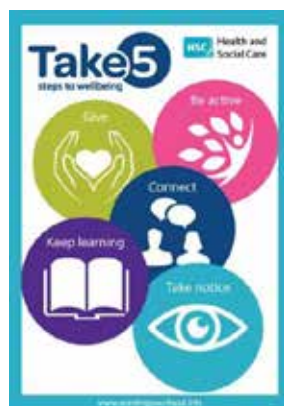
PC CONNECT is a programme of sporting and enrichment activities for sixth form students on Wednesday afternoons which enable you to participate in the five steps to wellbeing: *Give, Be Active, Connect, Keep Learning and Take Notice*.

The PC Connect programme provides new experiences, the opportunity to enjoy a range of sporting and leisure activities, take qualifications and enjoy time together with fellow sixth formers. The options are provided at the College facilities, the South Lake Leisure Centre and other venues linked to serving our local community.

#### Options to Include\*

- Fitness Classes
- IFA Coaching, Education and Competition
- Introduction to British Sign Language (Level 1)
- OCN Level 1 Award in Youth Work Practice
- Pavilion Fitness Suite
- Powerwalking
- Primary School Voluntary Work Placements
- Rotary Interact
- South Lakes Leisure Centre options (eg Spin classes, Gym, Swimming and Water Sports)
- Strength and Conditioning sessions

(\*Availability will be confirmed in August 2024)







# Art & Design

## Examination Board: CCEA

What is A Level Art & Design about?

Through studying GCE Art & Design, students have opportunities to develop an interest in and enthusiasm for art, craft, design and media. Students gain knowledge and understanding of all Art based disciplines whilst gaining experience in working in a broad range of processes and materials.



## What will I study and how will I be assessed?

AS CONTENT	ASSESSMENT	%
<b>Unit AS 1: Experimental Portfolio</b> Students develop, explore and record ideas. Students base their portfolio on a theme that CCEA issue in a stimulus paper at the beginning of the AS course.	Teachers assess students' work, and CCEA moderate the results	50% of AS 20% of A Level
<b>Unit AS 2: Personal Response</b> Students present a personal outcome. In this unit, students respond to a theme issued in the stimulus paper. The response includes developmental work and an outcome that stems from the research and exploratory work completed for Unit AS 1.	Teachers assess the controlled task, and CCEA moderate the results	50% of AS 20% of A Level
A2 CONTENT	ASSESSMENT	%
<b>Unit A2 1: Personal and Critical Investigation</b> This unit includes both practical and written investigations and the use of theoretical research. Students demonstrate understanding through integrated practical and written forms.  Written investigation 1000–2000 words – externally assessed.	Teachers assess the practical investigation and CCEA moderate the results	60% of A2 36% of A Level
<b>Unit A2 2: Thematic Outcome</b> In this unit, students respond to a theme that we issue in a stimulus paper at the beginning of the A2 course. This unit includes developmental work and an outcome which stems from the personal investigation completed for Unit A2 1.	Teachers assess the practical investigation and CCEA moderate the results	40% of A2 24% of A Level

Are there any particular qualities or skills I should have to study this course and to what kind of careers can it lead?

Students studying AS and A2 Art and Design need primarily to be imaginative and creative. They should be able to work independently and make their own critical judgements whilst having a good knowledge and understanding of Art and Design processes and theory.

Possible careers include: media, graphics, web design, architecture, product design, film and animation, textile design, fashion-buying, interior design, teaching and art therapy.

Entry Requirements: Grade C\* or above in GCSE Art and Design.



# Biology

## **Examination Board: CCEA**

What is A Level Biology about?

An interesting detailed study of the intricacies of plants and animals along with microbes, genetics and ecology.

Biology is a very relevant and inspiring subject, with a lot of factual information, enabling students to have an ability to understand complex processes, analysis, evaluation, problem solving and practical skills.

## What will I study and how will I be assessed?

AS CONTENT	ASSESSMENT	%
<b>Unit AS 1</b> Molecules and Cells	External Examination	37.5% of AS 15% of A Level
<b>Unit AS 2</b> Organisms and Biodiversity	External Examination	37.5% of AS 15% of A Level
<b>Unit AS 3</b> AS Practical Skills	1 hour External Examination (50 marks) and internal practical assessment (21 marks)	25% of AS 10% of A Level
A2 CONTENT	ASSESSMENT	%
<b>Unit A2 1</b> Physiology, Co-ordination and Control and Ecosystems	External Examination	24% of A Level
<b>Unit A2 2</b> Biochemistry, Genetics and Evolutionary Trends	External Examination	24% of A Level
<b>Unit A2 3</b> A2 Practical Skills	1 hour 15mins External Examination (60 marks) and internal practical assessment (15 marks)	12% of A Level

Are there any particular qualities or skills I should have to study this course and to what kind of careers can it lead?

Studying Biology at A Level opens up a vast range of careers including medicine, dentistry, veterinary, agriculture, biosciences, ecology, forensics, genetics, physiotherapy, nursing, research, marine biology, horticulture, entomology etc.

**Entry Requirements:** Students seeking to study AS Biology must have B grade in GCSE Biology or AB grade or above in GCSE Double Award Science, along with a minimum of a B grade in GCSE Mathematics. All GCSE units in these subjects must be taken at Higher Tier.



# Business Studies

## Examination Board: CCEA

### What is A Level Business Studies about?

This subject engages students in the study of a range of business topics impacting on today's society. Students will gain an appreciation of growing a business through marketing activities and E-Business.

They also learn about the importance of financial information and its use in decision making.

Students will explore business planning and the need to manage risk when developing business strategies.

They will develop an appreciation of the role of accounting and financial information in making strategic business decisions, and an understanding of the macroeconomic and global framework within which organisations operate.



## What will I study and how will I be assessed?

AS CONTENT	ASSESSMENT	%
<b>Unit AS 1</b> Introduction to Business	External Examination Case study based questions	50% of AS 20 % of A Level
<b>Unit AS 2</b> Growing the Business	External Examination Case study based questions	50% of AS (20 % of A Level)
A2 CONTENT	ASSESSMENT	%
<b>Unit A2 1</b> Strategic Decision Making	External Examination Case study based questions	30% of A Level
<b>Unit A2 2</b> The Competitive Business Environment	External Examination Unseen case study based questions	30% of A Level

Are there any particular qualities or skills I should have to study this course and to what kind of careers can it lead?

You should have a keen interest in the world of business, and skills of interpretation, analysis, communication, working with others and evaluation are very important.

There are many possible careers in business, including management, marketing, sales, production and human resources. Many students go on to study business and related courses, while others may opt for the many financial and business apprenticeship “Earn as you learn” opportunities that companies are making available for school leavers.

Entry Requirements:  
Studying Business Studies at A level requires a Grade B minimum in GCSE Business Studies.

In addition, it is recommended that students have a Grade B in both Mathematics and English Language. Depending on numbers, it may be possible to study AS and A level Business Studies without a prior GCSE Business Studies qualification.

Following a minimum Grade B in both Mathematics and English Language, places would be allocated on a points basis, depending on available space in the subject.



# Chemistry

## Examination Board: CCEA

### What is A Level Chemistry about?

Chemistry is often described as the most versatile science, and it fits in well with the study of the other sciences. It is the science most often required by universities and higher education establishments for students to embark on degrees in medicine, dentistry, pharmacology,

and forensic and veterinary science. It is a very challenging and competitive subject in which students acquire skills that are valued in higher education and in the workplace such as research, investigation, analysis, communication, problem solving and working with others.

## What will I study and how will I be assessed?

AS CONTENT	ASSESSMENT	%
<b>Unit AS 1</b> Basic Concepts in Physical and Inorganic Chemistry	External Examination	40% of AS 16% of A Level
<b>Unit AS 2</b> Further Physical and Inorganic Chemistry and an Introduction to Organic Chemistry	External Examination	40% of AS 16% of A Level
<b>Unit AS 3</b> Basic Practical Chemistry	1 hour 15 mins External Examination involving practical tasks (laboratory) 1 hour 15 mins External Examination on practical knowledge (examination hall)	20% of AS 8% of A Level
A2 CONTENT	ASSESSMENT	%
<b>Unit A2 1</b> Further Physical and Organic Chemistry	External Examination	40% of A2 24% of A Level
<b>Unit A2 2</b> Analytical, Transition Metals, Electrochemistry and Organic Nitrogen Chemistry	External Examination	40% of A2 24% of A Level
<b>Unit A2 3</b> Further Practical Chemistry	1 hour 15 mins External Examination involving practical tasks (laboratory) 1 hour 15 mins External Examination on practical knowledge (examination hall)	20% of A2 12% of A Level

Are there any particular qualities or skills I should have to study this course and to what kind of careers can it lead?

Chemistry can lead to a wide variety of rewarding careers including medicine, dentistry, veterinary medicine, pharmacy, engineering, research and food science.

Entry Requirements:

Students seeking to study AS Chemistry must have B grade in GCSE Chemistry or AB grade or above in GCSE Double Award Science, along with a minimum of a B grade in GCSE Mathematics. All GCSE units in these subjects must be taken at Higher Tier.



# Computer Science

## Examination Board: WJEC

### What is A Level Computer Science about?

Computer technology is progressing at an ever increasing pace in both the business and personal worlds. This course will appeal to students who want to develop their programming knowledge and who enjoy working out solutions to problems. The emphasis on programming, mathematics and algorithms which underpins each component mirrors the ubiquity of programming in computer science, encouraging learners to think like programmers. This exciting course offered by the College offers a contemporary

approach to Computer Science from both the theoretical and practical perspectives. The course will encourage students to think creatively and innovatively in producing their solutions and to consider relationships between different aspects of computer science and its impact on today's global society.

The course will allow students to develop an understanding of and ability to analyse problems in computational terms through practical experience of solving such problems including writing programs to do so.



## What will I study and how will I be assessed?

AS CONTENT	ASSESSMENT	%
<b>Unit AS 1</b> Fundamentals of Computer Science	External Examination	62.5% of AS 25% of A Level
<b>Unit AS 2</b> Practical Programming to Solve Problems	On-Screen examination - 2 hours Consists of a series of set tasks completed on-screen by candidates	37.5% of AS 15% of A Level
A2 CONTENT	ASSESSMENT	%
<b>Unit A2 3</b> Programming and System Development	External Examination	20% of A Level
<b>Unit A2 4</b> Computer Architecture, Data, Communication and Applications	External Examination	20% of A Level
<b>Unit A2 5</b> Programmed Solution to a Problem	Internal Assessment	20% of A Level

Are there any particular qualities, skills I should have to study this course and to what kind of careers can it lead?

Students must have previous programming experience as per the entrance requirements below.

Computer Science is a useful A Level for many degree courses including Mathematics, Physics, Biology, Chemistry, Economics, Engineering, Medicine, Software Engineering, Psychology, and Sociology.

Computer Scientists are in demand and there are lots of career opportunities in areas such as Data Science/Analytics, Software Engineering, Agile Business Analytics, Technical Architecture, Test Engineering and Computer Networks.

Entry Requirements:

Students seeking to study AS Computer Science must have a Grade B in GCSE Digital Technology Programming (or equivalent Computing qualification). Students without GCSE Computing must have a grade A in GCSE Physics or Further Maths and have programming experience in Python.

**Students cannot study A Level Digital Technology and Computer Science.**



# Digital Technology

## Examination Board: CCEA

What is A Level Digital Technology about?

Digital Technology opens up an incredible world of opportunities for work, not only within the technology industry but also in supporting roles within other industries. This course will focus on developing those digital skills that are essential for the challenges and opportunities that our young people will face in the workplace in the 21st Century. This exciting specification aims to encourage students to develop a genuine interest in digital technology. Students will develop a range of digital skills together with an in-depth knowledge and understanding which will prepare them for the world of work or third level education. During this

course, students develop the capacity to think creatively, innovatively, analytically, logically and critically as they look at consequences of using digital technology on individuals, organisations and society.

Students will cover exciting topics such as; web technology/development and multimedia; networks; databases; artificial intelligence; robotics; cloud computing and data representation.

Through the application development unit students have the opportunity to apply their practical skills to produce a solution for a real-world situation, encouraging them to become discerning users of ICT.

## What will I study and how will I be assessed?

AS CONTENT	ASSESSMENT	%
<b>Unit AS 1</b> Approaches to Systems Development	External Examination	50% of AS 20 % of A Level
<b>Unit AS 2</b> Fundamentals of Digital Technology	External Examination	50% of AS 20 % of A Level
A2 CONTENT	ASSESSMENT	%
<b>Unit A2 1</b> Information Systems	External Examination	40% of A Level
<b>Unit A2 2</b> Application Development	External Examination Portfolio of evidence	20% of A Level

Are there any particular qualities, skills I should have to study this course and to what kind of careers can it lead?

The course provides a good foundation on which to pursue a career in the Digital Technology sector. There are many opportunities in this sector both in Northern Ireland and further afield. Students can go on to study various IT courses at university such as Computing Science, Business and IT, Computing and IT, Computer Systems, Business Management or apply for an Earn as You Learn Scheme.

A Digital Technology qualification can lead to a wide range of careers/ degree choices not restricted to the IT field. Past students have gone on to enter a variety of professions including medicine, nursing, teaching, media, podiatry, marketing, interior design and accountancy.

Students cannot study A Level Digital Technology and Computer Science.

Entry Requirements:

Grade B in GCSE Digital Technology (or equivalent IT qualification) or Business Communication Systems.



# Drama & Theatre

## Examination Board: WJEC

A Level Drama & Theatre is a modular qualification which can lead to an AS or an A2 qualification.

### What is A Level Drama & Theatre about?

A Level in Drama & Theatre is an exciting and inspiring course which prepares learners for further study in Higher Education and develops transferable skills which are relevant to a wide range of courses and careers.

The WJEC GCE AS and A Level in Drama & Theatre offers a practical and challenging course of study which encourages learners to develop and apply an informed, analytical framework for making, performing, interpreting and understanding drama and theatre. Students will develop the creativity and independence to become effective theatre makers. They will also augment their skills in analysing and evaluating their own work and the work of others.



## What will I study and how will I be assessed?

AS CONTENT	ASSESSMENT	%
<b>Unit AS 1: Theatre Workshop</b> Students create, develop and perform a piece of theatre based on a reinterpretation of an extract from a list supplied by WJEC. The piece must be developed using the techniques of an influential theatre practitioner or recognised theatre company.  Students can be assessed on either performance or design.	Internally assessed externally moderated	60% of AS 24% of A Level
<b>Unit AS 2: Text in Theatre</b> A series of questions about design and performance based on <i>Medea</i> by Euripides.	Written examination – 1 hour 30 mins	40% of AS 16% of A Level
A2 CONTENT	ASSESSMENT	%
<b>Unit A2 3: Text in Action</b> Students create, develop and perform two pieces of theatre based on a stimulus provided by WJEC.  Students can be assessed on either performance or design.	Externally assessed by a visiting examiner	36% of A Level
<b>Unit A2 4: Text in Performance</b> Two questions based on two different set texts.	External Examination – 2 hours 30 mins	24% of A Level

Are there any particular qualities or skills I should have to study this course and to what kind of careers can it lead?

The key skills which you will develop through A Level Drama & Theatre include creativity, working with others, problem-solving, communication, negotiation, self-discipline, time management, setting deadlines and meeting targets. You will also develop confidence and the ability to be constructively critical. Students are expected to develop an interest in going to the theatre during their A Level studies but prior familiarity with live productions is not a pre-requisite of the course.

The qualities developed during the course are transferable skills and students have gone on to follow a wide range of careers.

These include law, public relations, publishing, teaching, media consultancy, arts administration, professional acting and technical support in the theatre and film production.

Entry requirements:

Grade B in GCSE Drama or grade B in English Language.

**GCSE Drama is not obligatory.**



# Economics

## Examination Board: CCEA

What is A Level Economics about?

Economics addresses some of the most pressing problems and issues that society faces today, including questioning things such as: What should be the market's role in providing for society's wants? How can individuals, businesses and governments manage their resources effectively?

What are the best solutions for environmental problems such as pollution, road congestion and climate change? How can we ensure that poorer countries as well as richer ones benefit from globalisation? Economics provides students with a tool kit of concepts, ideas and techniques. These tools allow them to critically investigate and analyse problems, evaluate information and evidence and arrive at reasoned conclusions and judgements.

## What will I study and how will I be assessed?

AS CONTENT	ASSESSMENT	%
<b>Unit AS 1: Markets and Market Failure</b> How markets work – how market forces of supply and demand interact to allocate resources. Why markets fail – causes and consequences of market failure in provision of services such as health and education and over production of goods causing pollution.	External Examination	50% of AS  20% of A Level
<b>Unit AS 2: Managing the National Economy</b> How an economy works, macroeconomic measures such as economic growth, inflation, unemployment and balance of payments. Using aggregate demand and aggregate supply model to analyse changes in the economy. Evaluation of government policies aimed at dealing with the consequences of these changes.	External Examination	50% of AS  20% of A Level
A2 CONTENT	ASSESSMENT	%
<b>Unit A2 1: Business Economics</b> The number and size of businesses, how firms compete with each other, how firms grow both organically and through mergers and takeovers. The goals and aims of businesses, the role of competition and the government in markets. Understanding of economic behaviour in markets.	External Examination	30 % of A Level
<b>Unit A2 2: Managing the economy in a global world</b> The significance of globalisation, international trade, the balance of payments and exchange rates. Analysis of government finance, macroeconomic policies and the role of the financial sector in a global context. Factors influencing growth and development of developing countries.	External Examination	30% of A Level

Are there any particular qualities, skills I should have to study this course and to what kind of careers can it lead?

You should have an interest in current affairs, as many of the topics studied are related to the news and key stories in business and the economy. There are many careers options open to students studying Economics both at school and university.

These include effectively any career in finance, business, accountancy, stock markets, human resources, management, as well as actually working as an economist.

Several former students have gone on to study Economics and related subjects at a range of universities, including Harvard, Oxford, Cambridge and the London School of Economics. In addition, several students have studied subjects such as Finance and Accounting at universities including Queen's University Belfast.

**Entry Requirements:**  
 Grades BB in a combination of English Language and Mathematics. Mathematics must be at the higher tier. 20% of all marks at A level are for quantitative skills, so a good understanding and competence in Mathematics is essential. In addition you need to have good skills of analysis, interpretation and evaluation.



# English Literature

## **Examination Board: CCEA**

What is A Level English  
Literature about?

English Literature is the study of literary texts of different genres, spanning a range of contexts. Students will learn how context influences text and how writers craft language to explore themes of universal significance. In so doing they will develop the ability to evaluate, think independently and communicate effectively in spoken and written language.



## What will I study and how will I be assessed?

AS CONTENT	ASSESSMENT	%
<b>Unit AS 1</b> The Study of Poetry 1900 – Present and Drama 1900 - Present	External Examination	60% of AS 24% of A Level
<b>Unit AS 2</b> The Study of Prose Pre 1900	External Examination	40% of AS 16% of A Level
A2 CONTENT	ASSESSMENT	%
<b>Unit A2 1</b> Shakespearean Genres	External Examination	20% of A Level
<b>Unit A2 2</b> The Study of Poetry Pre 1900 and Unseen Poetry	External Examination	20% of A Level
<b>Unit A2 3</b> Internal Assessment	Internal Assessment	20% of A Level

Are there any particular qualities or skills I should have to study this course and to what kind of careers can it lead?

To study English Literature at A Level you should enjoy reading, watching and listening to texts, researching, working independently, discussing your views and writing analytically.

The study of English Literature at A Level opens up a range of career pathways from further study of Literature to film and theatre studies, drama, law, journalism, and humanities. Other pathways include law, finance, health, marketing, human resources, civil service and management.

A qualification in English Literature at A Level is highly regarded as evidence of competence in communication, selection, synthesis, analysis and empathy.

Entry requirements: Grade B in GCSE English Language AND grade B in English Literature. Where a student has not achieved the minimum grade B in BOTH subjects, a grade A/A\* in English Literature will be required.



# French

## Examination Board: CCEA

What is A Level French about?

This course is for students with an enthusiasm for, and interest in, French-speaking countries and their culture. It will develop existing language skills and make students more confident communicators,

inspiring them through the study of topical global and social themes. It is particularly suitable for students who have studied GCSE French and who wish to study French at a higher level.

## What will I study and how will I be assessed?

AS CONTENT	ASSESSMENT	%
<b>Unit AS 1</b> Speaking	External Examination	30% of AS Level 12% of A Level
<b>Unit AS 2</b> Listening, Reading and Use of Language	External Examination	40% of AS Level 16% of A Level
<b>Unit AS 3</b> Extended Writing	External Examination	30% of AS Level
A2 CONTENT	ASSESSMENT	%
<b>Unit A2 1</b> Speaking	External Examination	18% of A Level
<b>Unit A2 2</b> Listening, Reading and Prose Translation	External Examination	24% of A Level
<b>Unit A2 3</b> Extended Writing	External Examination	18% of A Level

**At AS Level students explore the themes of Relationships and Culture and Lifestyle. Students also conduct a personal research project and study a film or a literary text. Students who continue on to A2 will complete a research project and study a literary text. They will also explore the themes of Young People in Society and Our Place in a Changing World.**

Are there any particular qualities or skills I should have to study this course and to what kind of careers can it lead?

You should have a strong and evident enthusiasm for the language you choose to study and its culture. You will need to be independent enough to practise and apply the skills learned in the classroom at home so that you progress quickly.

The language classroom is a challenging and fast-paced learning environment which calls for sharp focus, personal motivation and the ability to think

and learn on your feet. Students may choose to pursue a career directly linked to languages, such as interpreting or translating.

A wide range of other interesting careers like business, tourism and engineering are also open to language students because their communication, problem-solving and teamwork skills are valued by employers.

Entry Requirements: GCSE grade 'B' with Listening, Writing and Reading components all completed at Higher Tier.



# Further Mathematics

## Examination Board: CCEA

What is A Level Further Mathematics about?

This allows you to take a second Mathematics A Level. It is an extension of the material covered in AS and A2 Mathematics and is particularly suited to able mathematicians who wish to become highly proficient in this subject.



## What will I study and how will I be assessed?

AS CONTENT	ASSESSMENT	%
<b>Unit AS 1: Pure</b> Complex numbers, matrices and vectors	External Examination With calculator 1 hour 30 minutes	50% of AS Level 20% of A Level
<b>Unit AS 2: Applied</b> Mechanics: Hooke's law, work & energy, power, circular motion, relative velocity, gravitation and dimensions	External Examination With calculator 1 hour 30 minutes	50% of AS Level 20% of A Level

A2 CONTENT	ASSESSMENT	%
<b>Unit A2 1: Pure</b> Proof, further algebra & functions, complex numbers, further calculus, polar coordinates, hyperbolic functions and differential equations	External Examination With calculator 2 hours 15 minutes	30% of A Level
<b>Unit A2 2: Applied</b> Mechanics: Simple harmonic motion, damped oscillations, centre of mass, frameworks, circular motion, further kinematics, force systems in 2-D and restitution	External Examination With calculator 2 hours 15 minutes	30% of A Level

Are there any particular qualities, skills I should have to study this course and to what kind of careers can it lead?

An A Level in Further Mathematics provides an excellent background for further study in mathematics, physics or engineering. It is also designated as a “desirable” subject for highly competitive university courses in Economics.

Entry Requirements:

Entry to this subject is 170 uniform marks or above (a high grade A) in GCSE Further Mathematics.



# Geography

## Examination Board: CCEA

What is A Level Geography about?

A level Geography provides students with the opportunity to explore geographical concepts and processes including interactions between people and their environment, the challenges of sustainability and the importance of attitudes and values.

Geography is relevant, stimulating and interesting.

In addition to developing geographical knowledge, this course will provide you with the opportunity to further develop transferable skills in communication, teamwork, analysis, investigation, evaluation, decision making, ICT and map reading.

## What will I study and how will I be assessed?

AS CONTENT	ASSESSMENT	%
<b>UNIT AS 1</b> Physical Geography, Fluvial Environments, Ecosystems, Weather and Climate	External Examination	40% of AS Level 16% of A Level
<b>UNIT AS 2</b> Human Geography, Population, Settlement Development	External Examination	40% of AS Level 16% of A Level
<b>UNIT AS 3</b> Fieldwork Skills and Techniques in Geography	External Examination	20% of AS Level 8% of A Level
A2 CONTENT	ASSESSMENT	%
<b>UNIT A2 1</b> Physical Processes and Human Interactions Plate Tectonics, Coastal Environments	External Examination	24% of A Level
<b>UNIT A2 2</b> Processes and Issues in Human Geography Planning for Sustainable Settlements Tourism	External Examination	24% of A Level
<b>UNIT A2 3</b> Decision Making in Geography	External Examination	12% of A Level

Are there any particular qualities or skills I should have to study this course and to what kind of careers can it lead?

Geography students are highly employable as Geography develops such a broad range of skills. It is relevant to a wide range of career options including Geographical Information Systems, planning, environmental science, risk management and resource management.

Some specific jobs where Geography is directly used include: Public Communications Manager, Catastrophe Risk Analyst, Coastal or River Engineer, Geographic Information

Analyst, Planner, Hydrometry and Telemetry Officer, Surveyor, Social Development Advisor, Resource Manager, Incident Response Manager, Sustainability Analyst and Flood Hazard Researcher. Geographers are also highly regarded in the areas of teaching, social work, law, journalism and human resources.

Entry Requirements:  
B in GCSE Geography

Fieldwork is an essential component at both AS and A2 level. At AS level students will be required to attend a residential fieldwork activity at Magilligan Field Centre in the Autumn term. Fieldwork at A2 will also be completed.



# Government and Politics

## Examination Board: CCEA

What is A Level Government and Politics about?

If you are fascinated by the way decisions are made, who made them and the thinking behind them, then this subject is for you. It is the study of political systems in Northern Ireland, UK and USA. It also involves the study of Political Power in chosen countries around the world.

AS and A2 Government and Politics

develop essential knowledge and understanding of politics. This course concentrates on developing skills of debate, backed up by knowledge. Students look at the motivation behind actions and research differing opinions to argue their case. Much of the work will be carried out through group discussion which can be reported orally, in written form or through class presentations.



## What will I study and how will I be assessed?

AS CONTENT	ASSESSMENT	%
<b>Unit AS 1</b> The Government and Politics of Northern Ireland	External Examination	40% of AS 16% of A Level
<b>Unit AS 2</b> The British Political Process	External Examination	60% of AS 24% of A Level
A2 CONTENT	ASSESSMENT	%
<b>Unit A2 1</b> A comparative study of the Government and Politics of the USA and the UK	External Examination	35% of A Level
<b>Unit A2 2</b> Political Power	External Examination	25% of A Level

Are there any particular qualities or skills I should have to study this course and to what kind of careers can it lead?

The analytical and investigative skills developed in this course can contribute to a wide range of careers. Some of the main career pathways for students of Politics include law, management and consultancy, publishing and public relations, marketing and advertising, business and finance, accountancy, politics and political research, investigative journalism, media, broadcasting/communications and teaching and lecturing.

Entry Requirements:

Politics requires a Grade B in GCSE History or a Grade B in English Language or Literature.



# Health and Social Care

## Examination Board: CCEA

What is A Level Health and Social Care about?

This qualification gives students the opportunity to study an eclectic range of subjects relevant to the health, social care and early years' sectors: all major employers in Northern Ireland. Areas of study include good quality care, effective communication, health and wellbeing, safeguarding children, physiology and social policy.

Students acquire skills that are valued in further and higher education, as well as the work place. These include research,

investigation, problem solving, analysis, communication and working with others. During the AS year students will experience one/two work experience placement(s) in a care setting such as nursery/primary/special school, a care/nursing home, GP, medical centre or a variety of hospital settings including midwifery or the A and E department.

The rewards and benefits of work experience are real as students learn skills through working with other people, building self-esteem and developing confidence while shaping their potential career path.

## What will I study and how will I be assessed?

AS CONTENT	ASSESSMENT	%
<b>Unit AS 1: Promoting Quality Care</b> A written report based on practice in a health/social care/early years setting. Students learn how workers apply care values, conduct and practice, legislation and policies. Students research poor quality practice in a setting.	External Examination	25% of AS  10 % of A Level
<b>Unit AS 2: Communication In Care Settings</b> A second written report. Students explore communication skills/ techniques used in a health/social care/early years setting and develop their own communication skills.	Internal Assessment  CCEA Moderation	25% of AS  10 % of A Level
<b>Unit AS 3: Health and Well-being</b> Health and Well-being. Students learn about health and well-being, service users' needs, the impact of ill health on individuals, health promotion and discrimination issues.	External Examination	50% of AS  20% of A Level
A2 CONTENT	ASSESSMENT	%
<b>Unit A2 1: Providing Services</b> Students learn how services have developed, their structure, regulation and funding. Policy, legislation and demographic characteristics are examined. Practitioner roles are explored.	External Examination based on pre-release material	30% of A Level
<b>Unit A2 2: Body Systems and Physiological Disorders</b> Students learn about the structure, function and control mechanisms of two major body systems.	Internal Assessment  CCEA Moderation	Each unit 15 % of A Level.
<b>Unit A2 5: Supporting the Family:</b> Students focus on changing and evolving family structures in today's society. They research the range of family structures and the functions of families, investigating the wide range of services available to families and the support that these services offer. Students produce: <ul style="list-style-type: none"> <li>• a case study that describes their findings.</li> <li>• a report on how statutory services and voluntary organisations support families with significant issues.</li> </ul>	Internal Assessment  CCEA Moderation	Each unit 15 % of A Level.

Are there any particular qualities or skills I should have to study this course and to what kind of careers can it lead?

You should enjoy working with others, communicating orally and in written form, planning your own learning and be able to meet deadlines. The ability to work independently is essential.

This is an ideal course for students who want a broad background in health and social care. Many students with

a qualification in A Level Health and Social Care go on to degree-level study in a variety of subjects such as health studies, social policy, social science, social studies, psychology, nursing, paramedics, counselling, health-visiting and/or social work. Education is a further career direction. Other students go on to complete a BTEC Diploma in Health and Social Care. Some students go straight into employment in the fields of health and social care.

Entry requirement: B in English Language or English Literature.



# History

## Examination Board: CCEA

### What is A Level History about?

Our study focuses on sixteenth century and twentieth century history. We study the lives of the Kings and Queens of England and Spain as well as the ever changing face of the American presidency. Students will develop the ability to analyse and evaluate from a variety of sources and use a range of methods of communication.

They will develop critical thinking skills, the ability to work with others and work independently.



## What will I study and how will I be assessed?

AS CONTENT	ASSESSMENT	%
<b>Unit AS 1</b> Historical Investigations and Interpretations: England 1509-1558	External Examination	50% of AS  20% of A Level
<b>Unit AS 2</b> Historical Conflict and Change: Russia 1914-41	External Examination	50% of AS  20% of A Level
A2 CONTENT	ASSESSMENT	%
<b>Unit A2 1</b> Change Over Time: The American Presidency 1901-2000	External Examination	20% of A Level
<b>Unit A2 2</b> Historical Investigation and Interpretations: England 1558-1603	External Examination	40% of A Level

Are there any particular qualities or skills I should have to study this course and to what kind of careers can it lead?

Students will use a number of skills in this subject including gathering information, expressing opinions in both oral and written forms and understanding and interpreting source materials.

A range of communication skills alongside critical thinking skills open doors to a wide range of careers. Some of the main career pathways for students of History include: law; management and consultancy; publishing and public relations; marketing and advertising; business and finance; accountancy; investigative journalism; politics and political research; media, broadcasting and communications and, of course, teaching and lecturing.

Entry Requirements:

Grade B in GCSE History or a Grade A in both English Literature and Language.



# Life & Health Sciences

(Single Award)

## Examination Board: CCEA

What is A Level Life and Health Sciences about?

This Single Award A Level subject delivers a robust understanding of Biology and Chemistry for students who want to study Science at A Level but do not want to commit two of their A Level choices to the two subjects separately.

It also allows a pathway into A Level Science for students who have achieved high grades in GCSE Single Award Science.

The content is delivered by experienced Biology and Chemistry teachers.

The 2015 MATRIX sector report identified a significant skills gap in the life and health sciences sector, which generates £800m turnover per year in Northern Ireland.

This engaging qualification, developed with local employers including Almac, Norbrook and Intelesens, will foster the essential skills required by this growing sector and provide learners with numerous pathways into a wide range of STEM careers.

## What will I study and how will I be assessed?

AS CONTENT	ASSESSMENT	%
<b>UNIT AS 1</b> Experimental Techniques	Internal assessment – portfolio of evidence of Biology, Chemistry and Physics practical work	33.34% of AS 13.34 of A Level
<b>UNIT AS 2</b> Human Body Systems	External written examination 1 hour 30 mins	33.33% of AS 13.33% of A Level
<b>UNIT AS 3</b> Aspects of Physical Chemistry in Industrial Processes	External written examination 1 hour 30 mins	33.33% of AS 13.33% of A Level
A2 CONTENT	ASSESSMENT	%
<b>UNIT A2 1</b> Scientific Method, Investigation, Analysis and Evaluation	Internal assessment – students complete a portfolio of evidence that includes an essay, plans, a lab book, and a report with analysis and evaluation	20% of A Level
<b>UNIT A2 2</b> Organic Chemistry	External written examination 1 hour 45 mins	20% of A Level
<b>UNIT A2 5</b> Genetics, Stem Cell Research and Cloning	External written examination 1 hour 45 mins	20% of A Level

Are there any particular qualities or skills I should have to study this course and to what kind of careers can it lead?

If you are planning to apply for a very competitive Science course at university (e.g. Medicine, Dentistry, Veterinary Medicine, Pharmacy, Biomedical Science) it is recommended that you study Biology and Chemistry as separate A Level subjects.

Single Award Life & Health Sciences is accepted as the Science option in a range of courses (e.g. Nursing, Food Science and several Engineering disciplines – you

should check university websites and prospectuses to see if it is accepted for the courses that you are interested in applying for).

### Entry requirements

Students seeking to study AS Single Award Life & Health Sciences must have:

1. At least a grade B in GCSE Chemistry and Biology, or at least a grade BB in GCSE Double Award Science, or at least a grade A in GCSE Single Award Science (please note that all units in the aforementioned subjects must be taken at Higher Tier).
2. At least a grade B in GCSE Mathematics.



# Mathematics

## Examination Board: CCEA

What is A Level Mathematics about?

AS and A2 further develop the knowledge and problem-solving skills acquired in GCSE Mathematics and Further Mathematics. There is an emphasis on the ability to reason logically and use mathematics as an effective means of communication. At this level you should

begin to appreciate the relationships between different areas of mathematics and realise the relevance to other subjects and areas of work.



## What will I study and how will I be assessed?

AS CONTENT	ASSESSMENT	%
<b>Unit AS 1: Pure</b> Algebra & functions, coordinate geometry, sequences & series, trigonometry, exponentials & logarithms, differentiation, integration and vectors.	External Examination With calculator 1 hour 45 minutes	60% of AS Level 24% of A Level
<b>Unit AS 2: Applied</b> Mechanics: Kinematics, forces and Newton's laws Statistics: Sampling, data presentation & interpretation, probability and statistical distribution	External Examination With calculator 1 hour 15 minutes	40% of AS Level 16% of A Level
A2 CONTENT	ASSESSMENT	%
<b>Unit A2 1: Pure</b> Algebra & functions, coordinate geometry, sequences & series, trigonometry, differentiation, integration and numerical methods.	External Examination With calculator 2 hours 30 minutes	36% of A Level
<b>Unit A2 2: Applied</b> Mechanics: Kinematics, moments and impulse & momentum Statistics: Probability, statistical distribution and hypothesis testing	External Examination With calculator 1 hour 30 minutes	24 % of A Level

Are there any particular qualities, skills I should have to study this course and to what kind of careers can it lead?

An A Level in Mathematics will be essential for careers in mathematics, physics or engineering and would also be useful if considering a career in architecture, accountancy, business, economics, finance or computer programming. The skills acquired

would also be valuable if considering a biological or medical career.

Entry Requirements:

A grade B or above in GCSE Further Mathematics. Students who have not studied GCSE Further Mathematics must attain a grade A or above in GCSE Mathematics (from M4 and M8).



# Moving Image Arts

## Examination Board: CCEA

What is A Level Moving Image Arts about?

Moving Image Arts is the study of films and filmmaking through the process of making your own short live action film or animation. Moving Image Arts is a combination of all other art forms

(performance, musical, visual, physical, lyrical, textual).

This subject aims to develop imaginative, creative, and expressive skills through the use of a range of professional industry level software used in the well-equipped Mac Editing Suite.

## What will I study and how will I be assessed?

AS CONTENT	ASSESSMENT	%
<b>Unit AS 1</b> Realist and Formalist Techniques and the Classical Hollywood Style: Foundation Portfolio	Students must produce: <ul style="list-style-type: none"> <li>• a Statement of Intention</li> <li>• pre-production materials</li> <li>• a one 3–4 minute narrative film sequence or 1.5 – 2 minute animation sequence based on provided stimuli and an evaluation</li> </ul> Teachers mark the coursework and CCEA moderate the results	60% of AS 24% of A level.
<b>Unit AS 2</b> Critical Response	Students take a 1 hour 30 minute online External Examination with questions on clips from set study areas <ul style="list-style-type: none"> <li>• Section A – Hitchcock and the Classical Hollywood Style</li> <li>• Section B – Formalism: Early European Cinema and American Expressionism</li> </ul>	40% of AS 16% of A level
A2 CONTENT	ASSESSMENT	%
<b>Unit A2 1</b> Creative Production and Research: Advanced Portfolio	Students must produce: <ul style="list-style-type: none"> <li>• an illustrated essay</li> <li>• pre-production materials</li> <li>• one 4–7 minute long narrative film or 2–3.5 minute long animation</li> <li>• an evaluation Internal Assessment</li> </ul>	36% of A Level
<b>Unit A2 2</b> Advanced Critical Response	Students take a 2 hour and 15 minute online External Examination with questions based on clips from set study areas and an unseen script <ul style="list-style-type: none"> <li>• Section A – Realism: Narrative and Visual Style</li> <li>• Section B – Creative Exercise</li> <li>• Section C – Comparative Analysis</li> </ul>	24% of A Level

Are there any particular qualities or skills I should have to study this course and to what kind of careers can it lead?

Moving Image Coursework is ‘hands on’. Candidates must be creative and keen to develop technical film making skills. All candidates will develop and edit a short live action film or animation and produce materials to support their production. They will experiment with various filmmaking techniques and styles. Candidates will analyse film sequences, past and present, and will sit an on-line theory exam. Studying MIA is a gateway into the creative digital industries. Many students who have

studied this subject have progressed onto specialist degree courses. A degree in one of the many areas of Film or Media can offer dynamic and wide-ranging choices of careers. Whether it is scriptwriting, set design, costume and makeup, storyboarding, art directing, animation, film or television, MIA equips you with excellent foundation skills for all of these areas.

Entry Requirements:  
Minimum Grade B in GCSE Moving Image Art. Students do not need to have studied Moving Image Arts at GCSE level to select this subject. Students who have not studied MIA require a Grade B in English Language or English Literature.



# Music

## Examination Board: CCEA

### What is A Level Music about?

AS and A2 Music develop essential knowledge and understanding of the many aspects of Music. Pupils have opportunities to develop composition and performance skills to a higher level and study several music topics in more depth, looking at the social and cultural context

to works and composers. Set pieces are studied for the aural perception paper and written paper alongside a more in depth appreciation of the various periods of music.

Works not specifically studied will also be assessed in the examination.

## What will I study and how will I be assessed?

AS CONTENT	ASSESSMENT	%
<b>Unit AS 1</b> Performing: <ul style="list-style-type: none"> <li>• Solo (grade 6)</li> <li>• Viva voce</li> </ul>	External Examination assessed by visiting examiner	32.5% of AS 13% of A Level
<b>Unit AS 2</b> Composing: <ul style="list-style-type: none"> <li>• Recorded composition</li> <li>• Commentary</li> </ul>	Coursework 1.5 - 2.5 minutes	32.5% of AS 13% of A Level
<b>Unit AS 3</b> Responding to Music: <ul style="list-style-type: none"> <li>• Music for Orchestra 1700-1900</li> <li>• Sacred vocal music (anthems)</li> <li>• Secular vocal music (musicals)</li> </ul>	Two External Examinations: <ul style="list-style-type: none"> <li>• Aural Perception Examination</li> <li>• Written Examination</li> </ul>	35% of AS 14% of A Level
A2 CONTENT	ASSESSMENT	%
<b>Unit A2 1</b> Performing: <ul style="list-style-type: none"> <li>• Solo (grade 7)</li> <li>• Viva voce</li> </ul>	External Examination assessed by visiting examiner	19.5% of A Level
<b>Unit A2 2</b> Composing: <ul style="list-style-type: none"> <li>• Recorded composition</li> <li>• Commentary</li> </ul>	Coursework 2 - 3 minutes	19.5% of A Level
<b>Unit A2 3</b> Responding to Music: <ul style="list-style-type: none"> <li>• Music for Orchestra in 20th Century</li> <li>• Sacred vocal music (mass/requiem mass)</li> <li>• Secular vocal music (1600 to present day)</li> </ul>	Two External Examinations: <ul style="list-style-type: none"> <li>• Aural Perception Examination</li> <li>• Written Examination</li> </ul>	21% of A Level

Are there any particular qualities or skills I should have to study this course and to what kind of careers can it lead?

Career opportunities with music are wide ranging.

Specific music related careers include classroom teaching, composing, arranging, performing, music therapy, recording industry, arts administration, concert hall management, promotion of the arts, peripatetic teaching, television presenting and researching. The study of Music

strengthens one's ability to listen critically, evaluate, research, appreciate the value of context, write, analyse, apply technology, compose, present and perform. These transferable skills are highly valued in most non-musical careers.

Entry Requirements:

To study A level Music a student must have studied GCSE Music, ideally achieving an A or A\* grade and be able to perform on their instrument or sing at grade 6 level or above for AS and grade 7 or above for A2 level. Fluent reading of staff notation is essential.





# Nutrition and Food Science

## Examination Board: CCEA

What is A Level Nutrition and Food Science about?

At AS level the student will gain knowledge and understanding on food choices, exploring how nutrition is a fast-moving discipline, focusing on the role of diet in maintaining a healthy lifestyle and healthy human body.

At A2 students will develop a critical appreciation of the issues affecting our food supply, how they impact upon the environment, and the ethical implications.

All A2 students will select an area of personal interest to study for a research project. This will provide the opportunity to develop a wide range of transferable skills and capabilities relevant to higher education and the world of work such as critical and creative thinking, decision making, problem-solving, designing a research tool, analytical skills and targets setting.

## What will I study and how will I be assessed?

AS CONTENT	ASSESSMENT	%
<b>Unit AS 1: Principles of Nutrition</b> The study of micro and macro nutrients and other dietary constituents, nutritional requirements and current dietary recommendations across the lifespan.	External Assessment	50% of AS 20% of A Level
<b>Unit AS 2: Diet, Lifestyle and Health</b> The study of current research in relation to diet, lifestyle and health.	External Assessment	50% of AS 20% of A Level
A2 CONTENT	ASSESSMENT	%
<b>Unit A2 1</b> Option 1: Food Security and Sustainability: the study of consumer behaviour in relation to food purchasing decisions and a consideration of the issues and implications of consumer choice. Option 2: Food Safety and Quality: the study of securing a safe food supply from the primary producer to the consumer.	External Assessment	30% of A Level
<b>Unit A2 2: Research project:</b> Students complete a 4000 word research based assignment of their own appropriate choice.	Internal Assessment CCEA moderation	30% of A Level

Are there any particular qualities or skills I should have to study this course and to what kind of careers can it lead?

The student should be a confident communicator, have the ability to research information from a range of communication technologies, can problem-solve, work with others and be able to use mathematics to analyse data. It is the department's mission to enable the full potential of all learners to be achieved and recognised. To achieve this, the student needs motivation, dedication and the ability to work with facilitation and independently.

There are many career opportunities within the field of Nutrition and Food Science as scientific knowledge and research develops. The subject can open up a range of possibilities in the world of work,

both at home and worldwide. The course provides a solid foundation for further and higher education courses in Nutrition and Food Science, other related subjects and for a range of careers in areas such as dietetics, hospitality, leisure, education, food management and supply, food technology and consumerism. The career/degree choice is not restricted to food and/or health. Students who have studied this subject have gone on to enter a variety of professions including law, accountancy, nursing, medicine, forensic science.

Entry requirements: Grade B in GCSE Food and Nutrition: Home Economics or equivalent. Or fulfilment of Portadown College AS entry requirements to enable the study of this subject as a new choice A level.



# Physics

## Examination Board: CCEA

What is A Level Physics about?

Studying Physics deepens our understanding of the smallest detail of the world around us. Physicists are at the forefront of the pursuit of solutions to some of the biggest questions facing science and technological sectors today.

A-Level Physics students develop competences in a range of research, practical problem solving and mathematical skills.

All of these are highly regarded in further and higher education as well as in the workplace.

## What will I study and how will I be assessed?

AS CONTENT	ASSESSMENT	%
<b>Unit AS 1</b> Forces, Energy and Electricity	External Examination	40% of AS 16% of A Level
<b>Unit AS 2</b> Waves, Photons and Astronomy	External Examination	40% of AS 16% of A Level
<b>Unit AS 3</b> Practical Techniques and Data Analysis	Two 1 hour Externally Assessed papers (90 marks) One paper to assess practical experimental skills, another paper requiring analysis of experimental data	20% of AS 8% of A Level
A2 CONTENT	ASSESSMENT	%
<b>Unit A2 1</b> Deformation of Solids, Thermal Physics, Circular Motion, Oscillations & Atomic and Nuclear Physics	External Examination	40% of A2 24% of A Level
<b>Unit A2 2</b> Fields, Capacitors and Particle Physics	External Examination	40% of A2 24% of A Level
<b>Unit A2 3</b> Practical Techniques	Two 1 hour Externally Assessed papers (90 marks) One paper to assess practical experimental skills, another paper requiring analysis of experimental data	20% of A2 12% of A Level

Are there any particular qualities or skills I should have to study this course and to what kind of careers can it lead?

There is a wide range of careers for which Physics provides a good initial training. The more obvious career directions for a Physics student include academic and industrial research, working in Physics-based industries such as electronics, alternative energy development or communications, and the critical and growing area of Medical Physics. Physicists are also in demand, particularly for their analytical skills; within the finance sector in a range of financial, fund management and research roles; in the law; in management consultancy; as weather forecasters; computer programmers and, in a major shortage area, as Physics and Science teachers.

Entry Requirements:

The first measure of suitability for A-Level Physics is good grades in both Physics and Mathematics at GCSE. More specifically a grade B at Higher Tier in GCSE Physics or AA in Double Award Science (or Core and Additional Science as a Double Award). Due to the mathematical nature of many aspects of the course, it is essential that potential students have at least grade A in GCSE Mathematics, with GCSE Further Mathematics being desirable.



# Psychology

## Examination Board: AQA

### What is A Level Psychology about?

A Level Psychology is a linear qualification. Psychology students will sit all exams at the end of their A2 course. In Portadown College, students are required to sit AS examinations at the end of Year 13. To complete A2, students will have to complete all AS/A2 Level exams at the end of the A Level course.

The Psychology specification introduces students to a broad range of Psychology topics including: Social influence, Memory, Attachment, Approaches in psychology, Psychopathology, Research methods and Issues and debates in psychology.

Three further topics are studied from Relationships, Gender or Cognition and Development: Schizophrenia, Eating behaviour or Stress and Aggression, Forensic Psychology or Addiction.

The emphasis is on applying knowledge and understanding, thereby developing students' transferable skills of analysis, evaluation and critical thinking.



## What will I study and how will I be assessed?

AS CONTENT	ASSESSMENT	%
<b>Unit AS 1</b> Introductory topics in Psychology	External Examination	50% of AS
<b>Unit AS 2</b> Psychology in context	External Examination	50% of AS
A2 CONTENT	ASSESSMENT	%
<b>Unit A2 1</b> Introductory topics in Psychology	External Examination	33.3 % of A Level
<b>Unit A2 2</b> Psychology in context	External Examination	33.3 % of A Level
<b>Unit A2 3</b> Issues and options in Psychology	External Examination	33.3 % of A Level

Are there any particular qualities or skills I should have to study this course and to what kind of careers can it lead?

Students should have good time management skills, self-motivation, and resourcefulness. Communication skills are essential to negotiate, plan and deliver group projects and to discuss issues in tutorial groups.

Students will learn the fundamentals of the subject and develop skills valued by Higher Education (HE) and employers. Psychology can help the student's career either directly or indirectly. Students tend to follow careers in Health, Clinical, Sports and Educational Psychology. Forensic psychology is another pathway, as is counselling and education/teaching.

Entry requirements:

Grades ABB in any combination of the following subjects: Mathematics (Higher Tier), English (Language or Literature) and Science.

Or Grades BBB for the subjects referenced above and A grades in four other GCSE subjects.



# Religious Studies

## Examination Board: CCEA

What is A Level  
Religious Studies about?

GCE Religious Studies offers an academic approach to the study of religion, ethics and philosophy.

This subject is likely to appeal to students who enjoy discussing and critically evaluating contemporary philosophical issues such as the existence of God or an afterlife and the problem of evil. Within Ethics students will examine the relationship between religion and morality and focus on a range of ethical theories

including Utilitarianism, Situation Ethics, and Deontology.

These theories will be applied to modern ethical dilemmas such as abortion, euthanasia and medical ethics. Students taking this subject should be confident with extended writing as essays form the basis of the examination.

## What will I study and how will I be assessed?

AS CONTENT	ASSESSMENT	%
<b>Unit AS 1</b> An Introduction to the Philosophy of Religion	External Examination	50% of AS 20% of A Level
<b>Unit AS 2</b> Foundations of Ethics with special reference to issues in Medical Ethics	External Examination	50% of AS 20% of A Level
A2 CONTENT	ASSESSMENT	%
<b>Unit A2 1</b> Global Ethics	External Examination	30% of A level
<b>Unit A2 2</b> Themes in the Philosophy of Religion	External Examination	30% of A level

Are there any particular qualities or skills I should have to study this course and to what kind of careers can it lead?

Religious Studies is an excellent preparation for a wide range of university courses. It develops the skills to analyse and assess arguments, and to reflect, discuss and debate the fundamental issues - 'the big questions'. The skills learnt are essential for any future education or employment.

The application of philosophical and ethical ideas to practical moral issues (like abortion, euthanasia or holy war) can be especially relevant for those considering careers in law, the media, business and teaching.

The AS focus on Medical Ethics would be of great value for any student intending to study medicine or pursue a career in the wider medical field.

Entry Requirements: To study this subject at A Level students should have attained a 'B' grade in GCSE Religious Studies.



# Spanish

## Examination Board: CCEA

### What is A Level Spanish about?

This course is for students who value the opportunity to broaden their mind and widen their cultural horizons. This qualification is for students with a lively interest in language, who are interested in how other people think and live.

It is particularly suitable for students who have studied GCSE Spanish and who wish to study Spanish at a higher level.

## What will I study and how will I be assessed?

AS CONTENT	ASSESSMENT	%
<b>Unit AS 1</b> Speaking	External Examination	30% of AS 12% of A Level
<b>Unit AS 2</b> Listening, Reading and Use of Language	External Examination	40% of AS 16% of A Level
<b>Unit AS 3</b> Extended Writing	External Examination	30% of AS 12% of A Level
A2 CONTENT	ASSESSMENT	%
<b>Unit A2 1</b> Speaking	External Examination	18% of A Level
<b>Unit A2 2</b> Listening and Reading	External Examination	24% of A Level
<b>Unit A2 3</b> Extended Writing	External Examination	18% of A Level

**At AS Level students explore the themes of Relationships and Culture and Lifestyle. Students also conduct a personal research project and study a film or a literary text. Students who continue on to A2 will do a research project and study a literary text. They will also explore the themes of Young People in Society and Our Place in a Changing World.**

Are there any particular qualities or skills I should have to study this course and to what kind of careers can it lead?

You should have a strong and evident enthusiasm for the language you choose to study and its culture. You will need to be independent enough to practise and apply the skills learned in the classroom at home so that you progress quickly. The language classroom is a challenging and fast-paced learning environment which calls for sharp focus, personal motivation and the ability to think and learn

on your feet. This qualification will enable students to become part of the global workforce, where cross-cultural relationships and empathy for others are commonplace and essential.

Other skills that you will learn, such as research, evaluation and analysis lend themselves to a wide range of careers requiring language skills including marketing, charity work and business.

Entry Requirements: GCSE grade 'B' with Listening, Writing and Reading components all completed at Higher Tier.





# Sports Science and the Active Leisure Industry

## Examination Board: CCEA

What is A Level Sports Science and the Active Leisure Industry about?

Sports Science and the Active Leisure Industry focuses on relating theory to sport and its impact on performance. The specification is taught using a combination of teacher guidance and student input, through personal experiences, ideas and debates. Students are required to apply theory to sporting performance, and class input becomes an integral part of teaching and learning. Students are encouraged to learn and research independently and

to share resources. Practical application assists with the understanding of more complex theory from simple group exercises to complex sports testing using scientific laboratories and a visit to the High Performance Centre at the Sports' Institute of Northern Ireland (SINI), bringing the science of the subject to life.

## What will I study and how will I be assessed?

AS CONTENT	ASSESSMENT	%
<b>Unit AS 1</b> Fitness and Training for Sport	Internal Assessment Portfolio showing written evidence of training methods, fitness assessment and planning, leading and evaluating exercise sessions, and risk assessment	60% of AS  24% of A Level
<b>Unit AS 2</b> The Active Leisure Industry: Health, Fitness and Lifestyle	External Examination	40% of AS  16% of A Level
A2 CONTENT	ASSESSMENT	%
<b>Unit A2 1</b> Event Management in the Active Leisure Industry	Internal Assessment Portfolio showing written evidence of planning for an active leisure event and evaluation of outcome	36% of A Level
<b>Unit A2 2</b> The Application of Science to Sports Performance	External Examination	24% of A Level

Are there any particular qualities or skills I should have to study this course and to what kind of careers can it lead?

An active interest in sport is essential for any student wishing to study this course, as confidence is required to devise and lead training programmes. A qualification in Sports Science and the Active Leisure Industry can lead to a range of careers including: Exercise Physiologist, Sports Training, Sports Medicine, Sports Coach, Education, Sports Official, Sport Psychologist, Biomechanist, Sport Journalist, Administration, Sports Marketing and Selling Fitness Products.

Entry Requirements:  
 Grade B in GCSE Physical Education with a genuine interest in sport and exercise which is integral to the subject.



# Technology & Design

## Examination Board: CCEA

What is A Level Technology and Design about?

Technology and Design is a multifaceted, dynamic subject that not only teaches pupils an array of skills that they can develop into exciting careers, but also allows them to put their learning from other areas of the curriculum into practice.

Technology and Design is principally concerned with design and problem solving, placing a strong emphasis on mechanical, electrical and pneumatic systems incorporating computer and 3D modelling. The subject also develops product design and manufacturing skills, from carrying out investigations and developing designs leading to production of working prototypes.

## What will I study and how will I be assessed?

AS CONTENT	ASSESSMENT	%
<b>Unit AS 1</b> Design and Materials/Specialist Option	External Examination	50% of AS  20% of A Level
<b>Unit AS 2: Coursework</b> Product Development: Practical outcome with design folder	Internal assessment and external moderation	50% of AS  20% of A Level
A2 CONTENT	ASSESSMENT	%
<b>Unit A2 1</b> Product Design or Systems and Control	External Examination	30% of A Level
<b>Unit A2 2: Coursework</b> Product-System Design and Manufacture: Practical outcome with design folder	Internal assessment and external moderation	30% of A Level

Are there any particular qualities or skills I should have to study this course and to what kind of careers can it lead?

By studying Technology and Design, you'll be able to build up your creativity, problem solving, planning, and evaluation skills. Since many projects are done via group work, you'll also gain communication and teamwork skills.

Technology and Design can set you up for a career in a wide variety of industries such as engineering, architecture, information technology, careers in product/ graphic design, and even education.

Popular careers for people with Technology and Design qualifications include: Electrical/ mechanical engineer, product designer, architect, software engineer, civil engineer, construction, automotive technician, aircraft engineer.

Entry Requirements: Grade B in GCSE Technology & Design or have studied an equivalent Technology based subject to Grade B standard.



# Level 3 Applied Diploma in Tourism

Students will receive a Level 3 Applied Certificate in Tourism (equivalent to one AS level) in Year 13 and a Level 3 Applied Diploma (equivalent to one A2 level) in Year 14. The qualification is graded A\* - E the same as A Level and is the equivalent of one A Level.

## Examination Board: WJEC

### What is Tourism about?

This course enables students to gain an understanding of key pathways in the travel and tourism industry and includes knowledge of travel and tourism terminology, tourist destinations, business theory and the interactions between tourists and their environment. Through this students will develop a wide variety of desirable skills including

organisational, problem-solving, teamwork, communication and ICT skills as well as the ability to research and work independently. These skills can be applied across the business sector and are not solely for use in Tourism.



## What will I study and how will I be assessed?

CONTENT	ASSESSMENT	%
<b>Unit 1</b> The UK Tourism Product	External Written Examination	50% of Certificate 25% of Diploma
<b>Unit 2</b> Worldwide Tourism Destinations	Controlled Assessment Task (Internally assessed)	50% of Certificate 25% of Diploma
<b>Unit 3</b> The Dynamic Tourism Industry	External Written Examination	25% of Diploma
<b>Unit 4</b> Event and Itinerary Planning	Controlled Assessment Task (Internally assessed)	25% of Diploma

Are there any particular qualities, skills I should have to study this course and to what kind of careers can it lead?

No prior knowledge of Tourism is required and students who enjoy working independently and researching current issues would be particularly suited to this course.

A Level 3 Applied Diploma in Tourism will be relevant for jobs within the Travel Industry itself including Events Organiser, Tourism Manager, Tourist Information Officer, Public Relations Officer and Customer Services Manager. However, it also provides students with

the necessary skills required in a wide range of other areas of employment e.g. Marketing, IT Consultancy, Web Design, Multi Media Programming, Human Resources, Public Relations, Financial Management, Sales and Management. Studying Tourism along with a language opens up a world of career opportunities.

Entry Requirement: B in English Language or Literature

# Admissions Policy

**Portadown College**

Killicomaine Road

Portadown

CRAIGAVON

BT63 5BU

**Telephone:** (028) 3833 2439

**Fax:** (028) 3835 0733

**Email:** [info@pc.portadown.ni.sch.uk](mailto:info@pc.portadown.ni.sch.uk)

**Web-site:** [www.portadowncollege.com](http://www.portadowncollege.com)

**Principal:** Miss G R Gibb, BA (Hons), MSc, PGCE, PQH (NI)

**Chairman of the Board of Governors:** Mr P H Aiken, BA(Hons), DMS, CFCIPD

**Controlled Senior High School (Grammar)**

**Age Range:** 14-18

**Admissions No:** 220

**Enrolment No:** 780

**OPEN NIGHT 2024**

**7:00 – 9:00pm on Thursday 18 January 2024.**

**RESPECTIVE FUNCTIONS OF THE BOARD OF GOVERNORS AND PRINCIPAL IN RELATION TO ADMISSION TO THE SCHOOL**

The Board of Governors draws up the admissions criteria and delegates to a Transfer Subcommittee, which includes the Principal, the responsibility for applying these criteria. Any reference herein to the term Board of Governors includes any Committee or Subcommittee appointed by the Board of Governors for the purposes of applying the Admission Criteria set out herein.

**ADMISSIONS POLICY**

Portadown College will consider for admission those students who, in the judgement of the Board of Governors, are suited to and will benefit from the courses and form of education on offer in the College.

The lodging of an application for a place at Portadown College is interpreted by the Board of Governors as an indication that parents/guardians and the student concerned accept and are in agreement with the ethos, philosophy, aims, policies, rules and regulations of the College including any code of conduct or behaviour management policy of the College. Information in relation to this may be obtained from the College.

The lodging of an application for a place at Portadown College is interpreted by the Board of Governors that parents/guardians consent to the College receiving, storing and processing data for the purposes of admission.

Children resident in Northern Ireland at the time of their proposed admission will be selected for admission to the School before any child not so resident.

**When considering which students should be selected for admission, the Board**

**of Governors will only take into account information which is detailed on, or attached to, the application form alongside the provision of relevant information as indicated below. Parents/guardians should therefore ensure that all information pertaining to their young person and relevant to the College’s admissions criteria is uploaded to the EA Junior to Senior High Application Portal by the date and time specified.**

**DUTY TO VERIFY**

The Board of Governors reserves the right to require such supplementary evidence as it may determine to support or verify information on any application/transfer form.

The provision of false or incorrect information or the failure to provide verifying documents by the required deadlines may result in either the withdrawal of a place or the inability of the College to offer a place.

**CRITERIA FOR ADMISSION TO YEAR 11 AT THE BEGINNING OF THE 2024/2025 SCHOOL YEAR**

Priority will be given to applications stating Portadown College as 1st preference.

The number of places to be made available for each of the Contributory Junior High Schools will be based on the academic attainment of the students from each school who have applied for admission to Portadown College. The 2024 allocation will have regard to the allocation of places in Year 11 in previous years and historical performance data.

**Please see information below (Table 1) on how to access the EA Junior to Senior High Application Portal and key dates for September 2024 admissions (<https://www.eani.org.uk/parents/admissions/admission-to-senior-high-schools-age-14>):**

**Table (1)**

Monday 22 April 2024 (12 noon)	<b>Junior to Senior High application process opens with online portal available (from 12 noon) for applicants to apply for Year 10 admission.</b>
Friday 3 May 2024 (4pm)	<b>Online portal closes at 4pm for Junior to Senior High applications.</b>  <b>Note:</b> The online portal will not be accessible for JHS-SHS applications after this date/time.  On or before this date, Junior High Schools transfer pupil rank order data to Senior High Schools.

### ***A. Contributory Junior High Schools***

The Contributory Junior High Schools to Portadown College are: Clounagh Junior High School, Killicomaine Junior High School and Tandragee Junior High School.

Notwithstanding the information contained below in Section B, in the event of there being more applications on behalf of students attending any one particular Contributory Junior High School than places available for students from that school, the Board of Governors will select students on the basis of the overall Transfer score and rank order (highest to lowest).

(i) This selection will be based on the rank order of academic evidence provided to Portadown College in the form of the Transfer score.

(ii) In a contingency situation, the rank order of academic evidence provided for the student(s) affected by the contributory schools will be taken from their continuous assessment and/or standardised data.

The rank order of academic evidence recorded on the required proforma must be provided to the College by the Contributory Junior High School no later than 4.00 pm on Friday 3 May 2024.

### ***B. Schools other than Contributory Junior High Schools***

Up to 10 places are available to students attending schools other than the Contributory Junior High Schools (NB: the Contributory Junior High Schools are: Clounagh Junior High School, Killicomaine Junior High School and Tandragee Junior High School).

The Board of Governors will select students on the basis of an assessment of evidence made available to it of previous academic attainment and suitability of the education on offer at Portadown College.

The evidence of previous academic attainment must include the most recent report provided by the student's transferring school and should also include standardised test results for Key Stage 3 or its equivalent.

Students will be selected on the basis of a rank order (highest to lowest) established through inspection of the academic evidence provided.

Evidence of academic attainment of students not attending one of the Contributory Junior High Schools must be uploaded to the EA Junior to Senior High Application Portal no later than 4.00 pm on Friday 3 May 2024.

**It is incumbent on parents/guardians to ensure that this academic evidence is uploaded to the EA Junior to Senior High Application Portal within the timescales stated in Table 1.**

Table (2)

APPLICATIONS AND ADMISSIONS TO YEAR 11			
Year	Admissions No	Number of Applications	Total Admission (inc SEN applicants)
2021/2022	220	294	222
2022/2023	220	296	228
2023/24	220	244	221

SPECIAL CONSIDERATION

Special Consideration will be given to students whose normal progress has been adversely affected by medical or other problems which have impacted on their academic performance.

Parents/guardians who wish to make a request for Special Consideration must upload Form ASC (Application for Special Consideration) to the EA Junior to Senior High Application Portal, with accompanying documentary evidence attached, no later than 4.00pm on Friday 3 May 2024. It is the responsibility of parents/guardians to select the appropriate box when applying via the Portal to declare a request for Special Consideration. Form ASC must be verified by the student's transferring school Principal. Form ASC is available to download from the Portadown College website or may be obtained upon request made to the College.

In the event of not being able to separate applicant students down to the last available place the Admissions Sub-Criteria listed below will apply in the order given.

ADMISSIONS SUB-CRITERIA

Should there be more applications at any time than places available the following sub-criteria will be applied to identify the students to be admitted in the following order:

1. Sibling in attendance at Portadown College.
2. Children who, at the time of application, are the eldest child of the family eligible to apply.
3. Sibling previously attended Portadown College.
- 4.i. Initial letter of surname (as entered on birth certificate) in the order set out below:  
Y K T S L Mac Z Q O G N A Mc I H F V P R W D B C U J X E O' M
- 4.ii. In the event of surnames beginning with the same initial letter, the subsequent letters of the surname will be used in the order set out below:  
D B R U J X E Q G N C F H Z O V P A M Y K W T I S L
- 4.iii. In the event of two identical surnames, the alphabetical order of the letters of the forenames (as entered on birth certificate) will be used.
5. If applicants are still tied after this then priority will be determined amongst them by a method of computerised random selection capable of leaving a clear audit trail.



## **WAITING LIST POLICY**

The College does not operate a Waiting List Policy.

## **CRITERIA FOR ADMISSION DURING THE COURSE OF YEAR 11 AND AT THE BEGINNING OF OR DURING YEAR 12**

Consideration can only be given where places are available at the time of application.

Given that GCSE courses are of two years' duration, applications for admission to Year 12 will only be considered if the courses taken by the applicant in his/her previous school are compatible with those on offer in Portadown College.

## **CRITERIA FOR ADMISSION AFTER GCSE (16+)**

Students wishing to transfer to Portadown College for Sixth Form Courses should contact the Principal. Interested students are invited to the Open Night on Thursday 18 January 2024. Students wishing to register their interest in Sixth Form should contact the College Office (Tel: 028 38332439 or email: [info@pc.portadown.ni.sch.uk](mailto:info@pc.portadown.ni.sch.uk)) by Friday 21 June 2024.

Admission will be based on:

- (a) Evidence of academic attainment based on externally validated examinations. A minimum of 3 Grade B and 5 Grade C\*/C GCSE passes are required ("the Minimum Academic Criteria").
- (b) Availability of places in chosen subjects or courses.

The admissions criteria for admission after GCSE will be applied by the Principal on behalf of the Board of Governors.

Students who are currently attending the College and who have attained the Minimum Academic Criteria will be offered places in preference to students from other schools.

Students from other schools who meet the minimum criteria will be offered places on the basis of rank order of achievement in descending order based on total points (i.e. based on GCSE grades, or their numerical equivalences, where A\* = 4 points, A = 3 points, B = 2 points, C\* = 1.5 points, C = 1 point) and their entry is subject to places being available and/or the Principal requesting additional places from DENI with the support of the Education Authority.

Applications from students with qualifications other than GCSE will be assessed on the basis of GCSE equivalence where possible.

## **Portadown College criteria for any extra places made available by the Department of Education for admission into Year 13 (Sixth Form)**

The Department of Education may, on request, increase the number of students that

the College can admit to its Year 13. Places that become available in this way shall be allocated only to students who meet the basic eligibility criteria to be applied in the order set down.

1. Students who have most recently completed Year 12 in Portadown College.
2. Students from other schools where admission to an extra place at Portadown College has been agreed by the Department of Education.\*

\*Parents/guardians should note how the Department of Education (DE) will, in response to a school's request, increase the school's enrolment number in order to allow an extra post-16 student to enrol. DE will first check whether there is another school or schools of a type suitable for that student within an hour's journey of where the student lives. If there is, DE will then check whether this other school or schools with places available may provide all of the post-16 courses that the student wishes to pursue. If these checks find that no other suitable school may provide all of the post-16 courses that the student wishes to pursue – then DE will agree a school's request for an extra place.

What is a school of a type that is suitable for a student? To determine this, DE first considers all schools to be one of 4 types: (i) Denominational (ii) Non-denominational (iii) Integrated and (iv) Irish-Medium. A school requesting an extra place for a post-16 student will belong to one of these 4 types and DE will consider any other school or schools from this type as suitable for the student. DE will also consider as suitable for the students any school from the same type as the type of school that the student attended in Year 12.

### **Force Majeure**

In appropriate circumstances, the College will give due consideration to any circumstances which it feels qualifies for force majeure.



Portadown College  
Killicomaine Road,  
Portadown BT63 5BU

T: 028 38332439

F: 028 38350733

E: [info@pc.portadown.ni.sch.uk](mailto:info@pc.portadown.ni.sch.uk)

[www.portadowncollege.com](http://www.portadowncollege.com)

**INVESTORS IN PEOPLE®**  
We invest in people Standard